

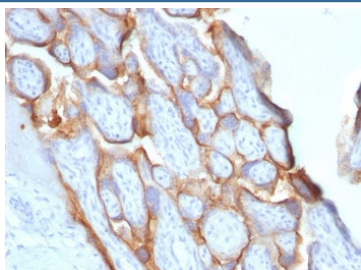
Recombinant HCG-beta Antibody / Rabbit Monoclonal [clone HCGb/1996R] (V3608)

Catalog No.	Formulation	Size
V3608-100UG	0.2 mg/ml in 1X PBS with 0.1 mg/ml BSA (US sourced) and 0.05% sodium azide	100 ug
V3608-20UG	0.2 mg/ml in 1X PBS with 0.1 mg/ml BSA (US sourced) and 0.05% sodium azide	20 ug
V3608SAF-100UG	1 mg/ml in 1X PBS; BSA free, sodium azide free	100 ug
V3608IHC-7ML	Prediluted in 1X PBS with 0.1 mg/ml BSA (US sourced) and 0.05% sodium azide; *For IHC use only*	7 ml

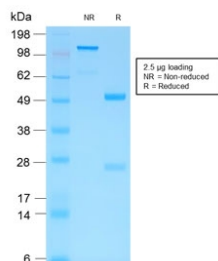
Recombinant RABBIT MONOCLONAL

[Bulk quote request](#)

Species Reactivity	Human
Format	Purified
Host	Rabbit
Clonality	Recombinant Rabbit Monoclonal
Isotype	Rabbit IgG, kappa
Clone Name	HCGb/1996R
Purity	Protein A affinity chromatography
Gene ID	1082
Localization	Cytoplasmic, Secreted
Applications	Immunohistochemistry (FFPE) : 1-2ug/ml for 30 min at RT
Limitations	This recombinant HCG-beta antibody is available for research use only.



IHC testing of FFPE human placenta with HCG-beta antibody (clone HCGb/1996R). Required HIER: boil tissue sections in pH 9 10mM Tris with 1mM EDTA for 10-20 min followed by cooling at RT for 20 min.



SDS-PAGE analysis of purified, BSA-free recombinant HCG-beta antibody (clone HCGb/1996R) as confirmation of integrity and purity.

Description

This antibody reacts with a protein of 22kDa, identified as beta subunit of HCG. It does not cross react with the alpha subunit. HCG is a glycoprotein which is secreted in large quantities by normal trophoblasts. It is present only in trace amounts in non-pregnant urine and sera but rises sharply during pregnancy. HCG is composed of two non-identical, non-covalently linked polypeptide chains designated as the alpha and beta subunits. The alpha subunit is identical to that of thyroid stimulating hormone (TSH), follicle stimulating hormone (FSH), and luteinizing hormone (LH). HCG-beta antibody detects cells and tumors of trophoblastic origin such as choriocarcinoma. Large cell carcinoma and adenocarcinoma of the lung demonstrate antibody positivity in 90% and 60% of cases respectively; 20% of lung squamous cell carcinomas are positive. HCG expression by non-trophoblastic tumors may indicate aggressive behavior.

Application Notes

The concentration stated for each application is a general starting point. Variations in protocols, secondaries and substrates may require the recombinant HCG-beta antibody to be titrated up or down for optimal performance.

1. The prediluted format is supplied in a dropper bottle and is optimized for use in IHC. After epitope retrieval step (if required), drip mAb solution onto the tissue section and incubate at RT for 30 min.

Immunogen

Recombinant protein was used as the immunogen for this recombinant HCG-beta antibody.

Storage

Store the recombinant HCG-beta antibody at 2-8oC (with azide) or aliquot and store at -20oC or colder (without azide).

References (1)