

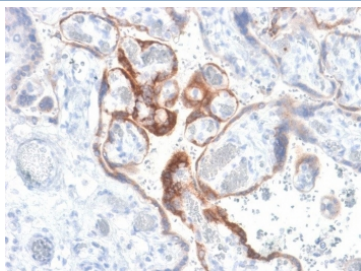
Recombinant HCG-beta Antibody / Rabbit Monoclonal [clone HCGb/1985R] (V3609)

Catalog No.	Formulation	Size
V3609-100UG	0.2 mg/ml in 1X PBS with 0.1 mg/ml BSA (US sourced) and 0.05% sodium azide	100 ug
V3609-20UG	0.2 mg/ml in 1X PBS with 0.1 mg/ml BSA (US sourced) and 0.05% sodium azide	20 ug
V3609SAF-100UG	1 mg/ml in 1X PBS; BSA free, sodium azide free	100 ug
V3609IHC-7ML	Prediluted in 1X PBS with 0.1 mg/ml BSA (US sourced) and 0.05% sodium azide; *For IHC use only*	7 ml

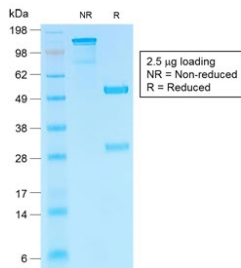
Recombinant **RABBIT MONOCLONAL**

[Bulk quote request](#)

Species Reactivity	Human
Format	Purified
Clonality	Recombinant Rabbit Monoclonal
Isotype	Rabbit IgG, kappa
Clone Name	HCGb/1985R
Purity	Protein A affinity chromatography
Gene ID	1082
Localization	Cytoplasmic, Secreted
Applications	Immunohistochemistry (FFPE) : 0.5-1ug/ml for 30 min at RT
Limitations	This recombinant HCG-beta antibody is available for research use only.



IHC testing of FFPE human placenta with HCG-beta antibody (clone HCGb/1985R). Required HIER: boil tissue sections in 10mM citrate buffer, pH 6, for 10-20 min followed by cooling at RT for 20 min.



SDS-PAGE analysis of purified, BSA-free recombinant HCG-beta antibody (clone HCGb/1985R) as confirmation of integrity and purity.

Description

HCG is a complex glycoprotein composed of two glycosylated subunits alpha and beta which are non-covalently associated. The alpha subunit is identical to those in the pituitary gonadotropin hormones (LH, FSH and TSH). The beta subunits are distinct in each of the hormones and confer receptor and biological specificity. Has an essential role in pregnancy and maternal adaptation. Stimulates the ovaries to synthesize the steroids that are essential for the maintenance of pregnancy. [UniProt]

Application Notes

Optimal dilution of the recombinant HCG-beta antibody should be determined by the researcher.

1. The prediluted format is supplied in a dropper bottle and is optimized for use in IHC. After epitope retrieval step (if required), drip mAb solution onto the tissue section and incubate at RT for 30 min.

Immunogen

Recombinant protein was used as the immunogen for this recombinant HCG-beta antibody.

Storage

Store the recombinant HCG-beta antibody at 2-8oC (with azide) or aliquot and store at -20oC or colder (without azide).

References (1)