

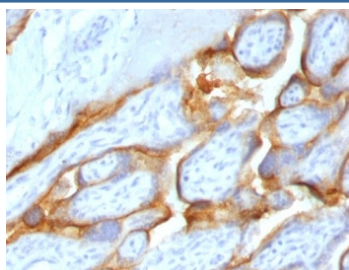
Recombinant HCG-beta Antibody / Rabbit Monoclonal [clone CGB63-2R] (V3709)

Catalog No.	Formulation	Size
V3709-100UG	0.2 mg/ml in 1X PBS with 0.1 mg/ml BSA (US sourced) and 0.05% sodium azide	100 ug
V3709-20UG	0.2 mg/ml in 1X PBS with 0.1 mg/ml BSA (US sourced) and 0.05% sodium azide	20 ug
V3709SAF-100UG	1 mg/ml in 1X PBS; BSA free, sodium azide free	100 ug
V3709IHC-7ML	Prediluted in 1X PBS with 0.1 mg/ml BSA (US sourced) and 0.05% sodium azide; *For IHC use only*	7 ml

Recombinant **RABBIT MONOCLONAL**

[Bulk quote request](#)

Species Reactivity	Human
Format	Purified
Clonality	Recombinant Rabbit Monoclonal
Isotype	Rabbit IgG, kappa
Clone Name	CGB63-2R
Purity	Protein A affinity chromatography
Gene ID	1082
Localization	Cytoplasmic, Secreted
Applications	Immunohistochemistry (FFPE) : 0.5-1ug/ml for 30 min at RT Prediluted IHC Only Format : incubate for 30 min at RT (1)
Limitations	This recombinant HCG-beta antibody is available for research use only.



IHC testing of FFPE human placenta with HCG-beta antibody (clone CGB63-2R).
Required HIER: boil tissue sections in pH 9 10mM Tris with 1mM EDTA for 10-20 min followed by cooling at RT for 20 min.

Description

Glycoprotein hormones are heterodimers consisting of a common alpha subunit and an unique beta subunit which confers biological specificity. CG is produced by the trophoblastic cells of the placenta and stimulates the ovaries to synthesize the steroids that are essential for the maintenance of pregnancy. The beta subunit of CG is encoded by 6 genes which are arranged in tandem and inverted pairs on chromosome 19q13.3 and contiguous with the luteinizing hormone beta subunit gene. [RefSeq]

Application Notes

The concentration stated for each application is a general starting point. Variations in protocols, secondaries and substrates may require the recombinant HCG-beta antibody to be titrated up or down for optimal performance.

1. The prediluted format is supplied in a dropper bottle and is optimized for use in IHC. After epitope retrieval step (if required), drip mAb solution onto the tissue section and incubate at RT for 30 min.

Immunogen

Recombinant protein was used as the immunogen for this recombinant HCG-beta antibody.

Storage

Store the recombinant HCG-beta antibody at 2-8oC (with azide) or aliquot and store at -20oC or colder (without azide).

References (1)