

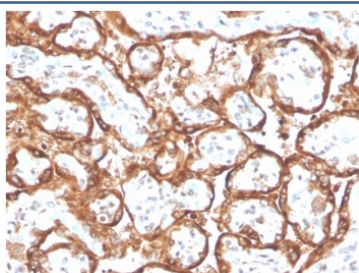
Recombinant hCG alpha Antibody [clone HCGa/2728R] (V9334)

Catalog No.	Formulation	Size
V9334-100UG	0.2 mg/ml in 1X PBS with 0.1 mg/ml BSA (US sourced), 0.05% sodium azide	100 ug
V9334-20UG	0.2 mg/ml in 1X PBS with 0.1 mg/ml BSA (US sourced), 0.05% sodium azide	20 ug
V9334SAF-100UG	1 mg/ml in 1X PBS; BSA free, sodium azide free	100 ug

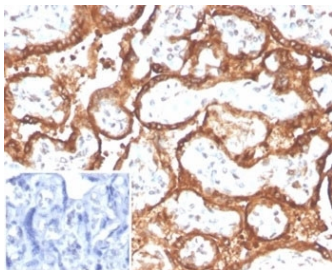
Recombinant **RABBIT MONOCLONAL**

[Bulk quote request](#)

Availability	1-3 business days
Species Reactivity	Human
Format	Purified
Host	Rabbit
Clonality	Recombinant Rabbit Monoclonal
Isotype	Rabbit IgG
Clone Name	HCGa/2728R
Purity	Protein A/G affinity
UniProt	P01215
Localization	Cytoplasmic, secreted
Applications	Immunohistochemistry (FFPE) : 1-2ug/ml
Limitations	This recombinant hCG alpha antibody is available for research use only.



IHC staining of FFPE human placental tissue with recombinant hCG alpha antibody (clone HCGa/2728R). HIER: boil tissue sections in pH 9 10mM Tris with 1mM EDTA for 20 min and allow to cool before testing.



IHC staining of FFPE human placental tissue with recombinant hCG alpha antibody (clone HCGa/2728R). Negative control inset uses PBS in place of primary antibody. HIER: boil tissue sections in pH 9 10mM Tris with 1mM EDTA for 20 min and allow to cool before testing.

Description

Human chorionic gonadotropin antibody (hCG) is a glycoprotein hormone synthesized in syncytiotrophoblastic cells of placenta and in certain trophoblastic tumors. The hormone-specific alpha chains have molecular weights of 13 kDa. HCG is found in moles and choriocarcinoma, chorionic components of germ cell tumors, and syncytiotrophoblast like cells in seminoma/dysgerminoma and embryonal carcinoma. In diagnostic pathology, hCG is a useful marker for classification of germ cell tumors, identification of extragonadal germ cell tumors.

Application Notes

Optimal dilution of the recombinant hCG alpha antibody should be determined by the researcher.

Immunogen

A portion of amino acids 1-100 of hCG protein was used as the immunogen for the recombinant hCG alpha antibody.

Storage

Aliquot the recombinant hCG alpha antibody and store frozen at -20°C or colder. Avoid repeated freeze-thaw cycles.