

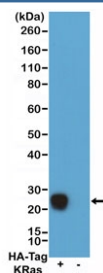
## Recombinant HA Tag Chimeric Human Antibody [clone RMH02] (R20305)

| Catalog No.  | Formulation   | Size   |
|--------------|---|--------|
| R20305-100UG | 1 mg/ml in PBS with 50% glycerol, 1% BSA and 0.09% sodium azide | 100 ug |

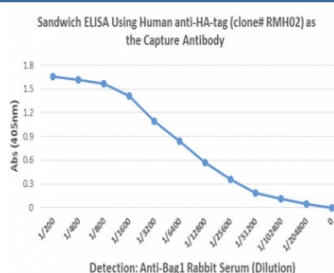
Recombinant **RABBIT MONOCLONAL**

[Bulk quote request](#)

|                    |  |
|--------------------|--|
| Availability       | 1-3 business days  |
| Species Reactivity | NA   |
| Format             | Purified   |
| Clonality          | Recombinant Rabbit Monoclonal  |
| Isotype            | Rabbit IgG   |
| Clone Name         | RMH02  |
| Purity             | Protein A purified from animal origin-free supernatant   |
| UniProt            | N/A  |
| Applications       | ELISA (Capture) : 0.5 ug/ml-2 ug/ml<br>ELISA (Detect) : 0.01 ug/ml-0.5 ug/ml<br>Western Blot : 0.1 ug/ml-1 ug/ml |
| Limitations        | This recombinant HA Tag Chimeric Human antibody is available for research use only.                              |



Western blot of 293T cells transfected (+) or non-transfected (-) with a DNA construct encoding HA-Tag KRas fusion protein, using recombinant HA Tag Chimeric Human antibody at 0.1 ug/ml, followed by a HRP conjugated anti-Human IgG secondary.



Sandwich ELISA performed on whole lysate of human LNCaP cells overexpressing HA-tag Bag1 protein. ELISA plate was coated with 50uL/well of recombinant HA Tag Chimeric Human antibody (1ug/ml) as the capture. Anti-Bag1 rabbit serum was used as the detect, followed by an alkaline phosphatase conjugated anti-Rabbit IgG as the secondary Ab.

## Description

This antibody reacts to recombinant proteins containing a HA-Tag fused to either the amino or carboxy terminus. An anti-human IgG secondary is required for this mAb. No cross reactivity with any endogenous protein.

## Application Notes

The stated application concentrations are suggested starting points. Titration of the recombinant HA Tag Chimeric Human antibody may be required due to differences in protocols and secondary/substrate sensitivity.

## Immunogen

A peptide corresponding to HA-tag (Human influenza hemagglutinin amino acids 98-106) was used as the immunogen for the recombinant HA Tag Chimeric Human antibody.

## Storage

Store the recombinant HA Tag Chimeric Human antibody at -20oC.