

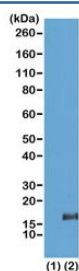
Recombinant H3K36me3 Antibody [clone RM155] (R20204)

Catalog No.	Formulation	Size
R20204-100UG	1 mg/ml in PBS with 50% glycerol, 1% BSA and 0.09% sodium azide	100 ug
R20204-25UG	1 mg/ml in PBS with 50% glycerol, 1% BSA and 0.09% sodium azide	25 ug

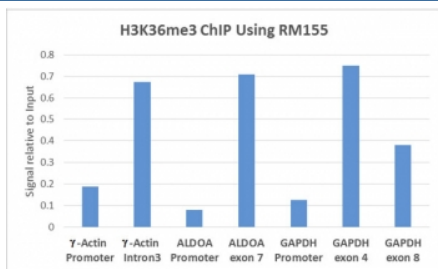
Recombinant **RABBIT MONOCLONAL**

[Bulk quote request](#)

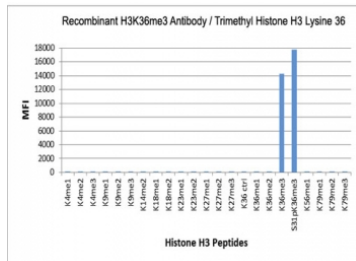
Availability	1-3 business days
Species Reactivity	Human
Format	Purified
Host	Rabbit
Clonality	Recombinant Rabbit Monoclonal
Isotype	Rabbit IgG
Clone Name	RM155
Purity	Protein A purified from animal origin-free supernatant
UniProt	P84243
Gene ID	8350
Applications	Western Blot : 0.5-2ug/ml ChIP : 2-10ug/mg of lysate ELISA : 0.2-1ug/ml
Limitations	This recombinant H3K36me3 antibody is available for research use only.



Western blot of recombinant histone H3.3 (1) and acid extracts of HeLa cells (2), using the recombinant H3K36me3 antibody at 2 ug/ml showed a band of Histone H3 trimethylated at Lysine 36 (K36me3) in HeLa cells.



ChIP performed on HeLa cells using the recombinant H3K36me3 antibody (5 μ g). Real-time PCR was performed using primers specific to the gene indicated.



The recombinant H3K36me3 antibody specifically reacts to Histone H3 trimethylated at Lysine 36 (K36me3). No cross reactivity with non-modified (K36 Ctrl), monomethylated (K36me1) or dimethylated Lysine 36 (K36me2), or other methylations in Histone H3.

Description

This recombinant H3K36me3 antibody reacts to Histone H3 trimethylated at Lysine 36 (K36me3). No cross reactivity with monomethylated Lysine 36 (K36me1) or dimethylated Lysine 36 (K36me2), or other methylations in histone H3.

Application Notes

The stated application concentrations are suggested starting points. Titration of the recombinant H3K36me3 antibody may be required due to differences in protocols and secondary/substrate sensitivity.

Immunogen

A trimethyl-peptide corresponding to Trimethyl-Histone H3 (Lys36) was used as the immunogen for this recombinant H3K36me3 antibody.

Storage

Store the recombinant H3K36me3 antibody at -20oC (with glycerol) or aliquot and store at -20oC (without glycerol).