

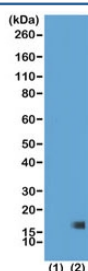
Recombinant H3K27me3 Antibody [clone RM175] (R20215)

Catalog No.	Formulation	Size
R20215-100UG	1 mg/ml in PBS with 50% glycerol, 1% BSA and 0.09% sodium azide	100 ug
R20215-25UG	1 mg/ml in PBS with 50% glycerol, 1% BSA and 0.09% sodium azide	25 ug

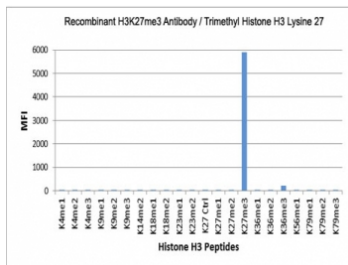
Recombinant **RABBIT MONOCLONAL**

[Bulk quote request](#)

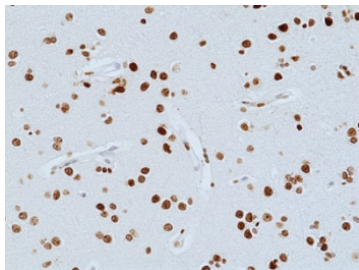
Availability	1-3 business days
Species Reactivity	Human
Predicted Reactivity	Human
Format	Purified
Host	Rabbit
Clonality	Recombinant Rabbit Monoclonal
Isotype	Rabbit IgG
Clone Name	RM175
Purity	Protein A purified from animal origin-free supernatant
UniProt	P84243
Gene ID	8350
Localization	Nuclear
Applications	Western Blot : 1-2ug/ml Immunohistochemistry (FFPE) : 0.5-2.5ug/ml ELISA : 0.5-1ug/ml
Limitations	This recombinant H3K27me3 antibody is available for research use only.



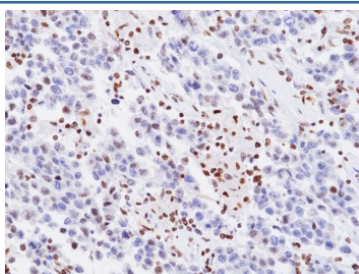
Western blot of recombinant Histone H3.3 (1) and acid extracts of HeLa cells (2) using recombinant H3K27me3 antibody at 1 ug/ml showed a band of histone H3 trimethylated at Lysine 27 (K27me3) in HeLa cells.



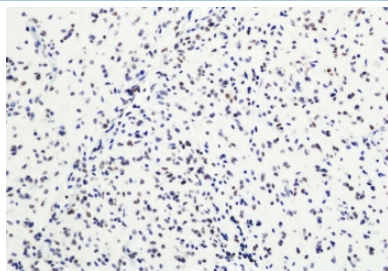
The recombinant H3K27me3 antibody specifically reacts to Histone H3 trimethylated at Lysine 27 (K27me3). No cross reactivity with non-modified (K27 Ctrl), monomethylated (K27me1) or dimethylated Lysine 27 (K27me2), or other methylations in Histone H3.



IHC staining of FFPE human brain tissue with recombinant H3K27me3 antibody. HIER: boil tissue sections in pH6, 10mM citrate buffer, for 20 min and allow to cool before testing.



IHC staining of FFPE human seminoma tissue with recombinant H3K27me3 antibody. HIER: boil tissue sections in pH6, 10mM citrate buffer, for 20 min and allow to cool before testing.



IHC staining of FFPE human glioblastoma tissue with recombinant H3K27me3 antibody. HIER: boil tissue sections in pH6, 10mM citrate buffer, for 20 min and allow to cool before testing.

Description

This recombinant H3K27me3 antibody reacts to Histone H3 trimethylated at Lysine 27 (K27me3). No cross reactivity with monomethylated (K27me1) or dimethylated Lysine 27 (K27me2), or other methylations in Histone H3.

Application Notes

The stated application concentrations are suggested starting points. Titration of the recombinant H3K27me3 antibody may be required due to differences in protocols and secondary/substrate sensitivity.

Immunogen

A trimethyl-peptide corresponding to Trimethyl-Histone H3 (Lys27) was used as the immunogen for this recombinant H3K27me3 antibody.

Storage

Store the recombinant H3K27me3 antibody at -20oC (with glycerol) or aliquot and store at -20oC (without glycerol).

