

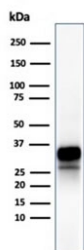
Recombinant GZMB Antibody / Granzyme B [clone rGZMB/4538] (V9489)

Catalog No.	Formulation	Size
V9489-100UG	0.2 mg/ml in 1X PBS with 0.1 mg/ml BSA (US sourced), 0.05% sodium azide	100 ug
V9489-20UG	0.2 mg/ml in 1X PBS with 0.1 mg/ml BSA (US sourced), 0.05% sodium azide	20 ug
V9489SAF-100UG	1 mg/ml in 1X PBS; BSA free, sodium azide free	100 ug

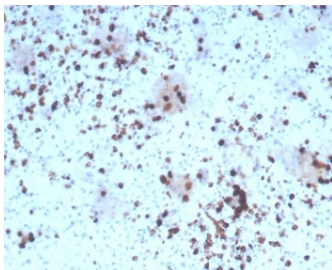
Recombinant **MOUSE MONOCLONAL**

[Bulk quote request](#)

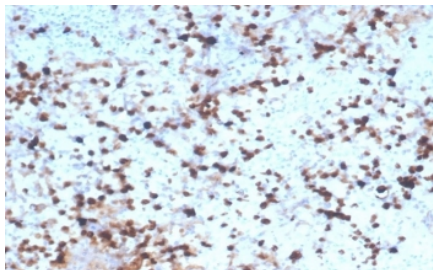
Availability	1-3 business days
Species Reactivity	Human
Format	Purified
Clonality	Recombinant Mouse Monoclonal
Isotype	Mouse IgG2a, kappa
Clone Name	rGZMB/4538
Purity	Protein A/G affinity
UniProt	P10144
Localization	Cytoplasm
Applications	Western Blot : 1-2ug/ml Immunohistochemistry (FFPE) : 1-2ug/ml
Limitations	This recombinant GZMB antibody is available for research use only.



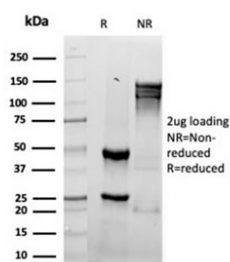
Western blot testing of human spleen tissue lysate using recombinant GZMB antibody (clone rGZMB/4538). Predicted molecular weight: 29-37 kDa.



IHC staining of FFPE human tonsil tissue with recombinant GZMB antibody (clone rGZMB/4538). HIER: boil tissue sections in pH 9 10mM Tris with 1mM EDTA for 20 min and allow to cool before testing.



IHC staining of FFPE human spleen tissue with recombinant GZMB antibody (clone rGZMB/4538). HIER: boil tissue sections in pH 9 10mM Tris with 1mM EDTA for 20 min and allow to cool before testing.



SDS-PAGE analysis of purified, BSA-free recombinant GZMB antibody (clone rGZMB/4538) as confirmation of integrity and purity.

Description

Granzyme B is a member of the granule serine protease family stored specifically in NK cells or cytotoxic T cells. Cytolytic T lymphocytes (CTL) and natural killer (NK) cells share the ability to recognize, bind, and lyse specific target cells. They are thought to protect their host by lysing cells bearing on their surface antigens, usually peptides or proteins resulting from infection by intracellular pathogens. Granzyme B is crucial for the rapid induction of target cell apoptosis by CTLs in the cell-mediated immune response. Granzyme B is useful as a marker in the identification of NK/T-cell lymphomas. High percentages of cytotoxic T-cells have been shown to be an unfavorable prognostic indicator in Hodgkin's Disease.

Application Notes

Optimal dilution of the recombinant GZMB antibody should be determined by the researcher.

Immunogen

A portion of amino acids 73-187 was used as the immunogen for the recombinant GZMB antibody.

Storage

Aliquot the recombinant GZMB antibody and store frozen at -20°C or colder. Avoid repeated freeze-thaw cycles.

