

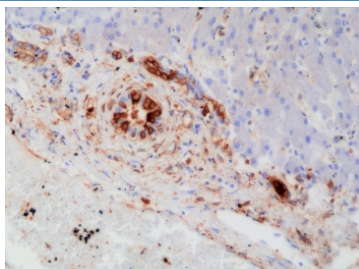
## Recombinant GST pi Antibody / GSTP1 [clone RM347] (R20369)

Catalog No.	Formulation	Size
R20369-0.1ML	Antibody in PBS with 50% glycerol, 1% BSA and 0.09% sodium azide	100 ul

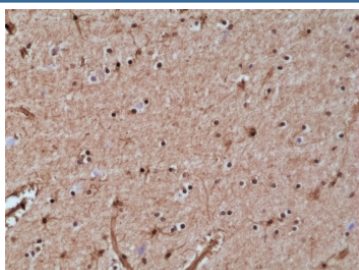
Recombinant **RABBIT MONOCLONAL**

[Bulk quote request](#)

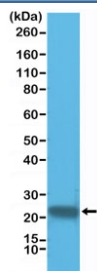
Availability	1-3 business days
Species Reactivity	Human
Format	Purified
Host	Rabbit
Clonality	Recombinant Rabbit Monoclonal
Isotype	Rabbit IgG
Clone Name	RM347
Purity	Protein A purified from animal origin-free supernatant
UniProt	P09211
Localization	Cytoplasmic, nuclear
Applications	Immunohistochemistry (FFPE) : 1:1000-1:20000 Western Blot : 1:1000-1:2000
Limitations	This recombinant GST pi antibody is available for research use only.



IHC staining of FFPE human liver tissue with recombinant GST pi antibody at 1:20,000.



IHC staining of FFPE human brain tissue with recombinant GST pi antibody at 1:20,000.



Western blot testing of human HeLa cell lysate with recombinant GST pi antibody at 1:1000. Predicted molecular weight ~23 kDa.

## Description

This antibody reacts to human GSTP1/GST3/GST-pi (Glutathione S-transferase P).

## Application Notes

The stated application concentrations are suggested starting points. Titration of the recombinant GST pi antibody may be required due to differences in protocols and secondary/substrate sensitivity.

## Immunogen

A peptide corresponding to the C-terminus of human GST3/GST-pi was used as the immunogen for the recombinant GST pi antibody.

## Storage

Store the recombinant GST pi antibody at -20°C.