

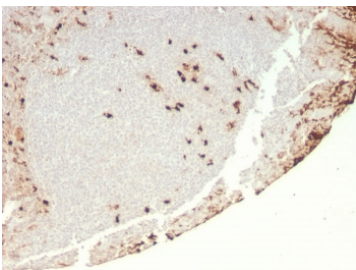
## Granulocyte-Colony Stimulating Factor Antibody / CSF3 [clone rCSF3/900] (V7695)

Catalog No.	Formulation	Size
V7695-100UG	0.2 mg/ml in 1X PBS with 0.1 mg/ml BSA (US sourced) and 0.05% sodium azide	100 ug
V7695-20UG	0.2 mg/ml in 1X PBS with 0.1 mg/ml BSA (US sourced) and 0.05% sodium azide	20 ug
V7695SAF-100UG	1 mg/ml in 1X PBS; BSA free, sodium azide free	100 ug

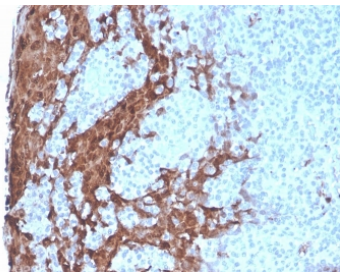
Recombinant **MOUSE MONOCLONAL**

[Bulk quote request](#)

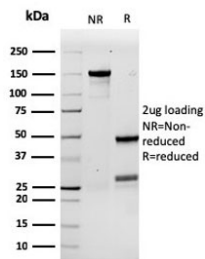
<b>Availability</b>	1-3 business days
<b>Species Reactivity</b>	Human
<b>Format</b>	Purified
<b>Host</b>	Mouse
<b>Clonality</b>	Recombinant Mouse Monoclonal
<b>Isotype</b>	Mouse IgG1, kappa
<b>Clone Name</b>	rCSF3/900
<b>Purity</b>	Protein G affinity chromatography
<b>UniProt</b>	P09919
<b>Localization</b>	Cytoplasmic
<b>Applications</b>	Immunohistochemistry (FFPE) : 1-2ug/ml Western Blot : 2-4ug/ml
<b>Limitations</b>	This Granulocyte-Colony Stimulating Factor antibody is available for research use only.



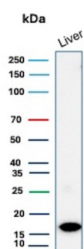
IHC staining of FFPE human tonsil with recombinant Granulocyte-Colony Stimulating Factor antibody (clone rCSF3/900). HIER: boil tissue sections in pH 9 10mM Tris with 1mM EDTA for 10-20 min and allow to cool before testing.



IHC staining of FFPE human tonsil with recombinant Granulocyte-Colony Stimulating Factor antibody (clone rCSF3/900). HIER: boil tissue sections in pH 9 10mM Tris with 1mM EDTA for 10-20 min and allow to cool before testing.



SDS-PAGE analysis of purified, BSA-free recombinant Granulocyte-Colony Stimulating Factor antibody (clone rCSF3/900) as confirmation of integrity and purity.



Granulocyte-Colony Stimulating Factor Antibody Liver WB. Western blot analysis of Granulocyte colony stimulating factor / CSF3 in human liver tissue lysate using recombinant mouse monoclonal Granulocyte-Colony Stimulating Factor antibody, clone rCSF3/900. A band is detected at approximately 18-20 kDa, consistent with the predicted molecular weight of G-CSF, supporting detection of this hematopoietic cytokine in tissue lysates.

## Description

Granulocyte-Colony Stimulating Factor Antibody recognizes granulocyte-colony stimulating factor (G-CSF) in the cytoplasm of mature granulocytes. It shows no reactivity with any other cell types. Markers of myeloid cells are useful in the identification of different levels of cellular differentiation. It reacts with early precursor and mature forms of myeloid cells. It is useful for the detection of myeloid leukemias and granulocytic sarcomas. It can be used as a marker of granulocytes in normal tissues or inflammatory processes. G-CSF is a pleiotropic cytokine that influences differentiation, proliferation and activation of the neutrophilic granulocyte lineage. The human G-CSF cDNA encodes a 207 amino acid precursor containing a 29 amino acid signal peptide that is proteolytically cleaved to form a 178 amino acid residue mature protein. Two G-CSF s, which are identical except for a three amino acid deletion in the amino-terminus of one form of the protein have been isolated from human cells.

For a reference GCSF antibody supporting cytokine signaling and immune regulation studies, see [clone CSF3/4594](#).

## Application Notes

Optimal dilution of the Granulocyte-Colony Stimulating Factor antibody should be determined by the researcher.

## Immunogen

A recombinant full-length human CSF3 protein was used as the immunogen for the recombinant Granulocyte-Colony Stimulating Factor antibody.

## Storage

Store the Granulocyte-Colony Stimulating Factor antibody at 2-8oC (with azide) or aliquot and store at -20oC or colder (without azide).

