

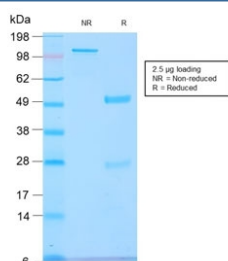
Recombinant GNRHR / LHCGR Antibody [clone GNRHR/2982R] (V7814)

Catalog No.	Formulation	Size
V7814-100UG	0.2 mg/ml in 1X PBS with 0.1 mg/ml BSA (US sourced) and 0.05% sodium azide	100 ug
V7814-20UG	0.2 mg/ml in 1X PBS with 0.1 mg/ml BSA (US sourced) and 0.05% sodium azide	20 ug
V7814SAF-100UG	1 mg/ml in 1X PBS; BSA free, sodium azide free	100 ug

Recombinant **RABBIT MONOCLONAL**

[Bulk quote request](#)

Availability	1-3 business days
Species Reactivity	Human
Format	Purified
Clonality	Recombinant Rabbit Monoclonal
Isotype	Rabbit IgG, kappa
Clone Name	GNRHR/2982R
Purity	Protein A affinity chromatography
UniProt	P30968, P22888
Applications	ELISA (order BSA-free Format For Coating) :
Limitations	This recombinant GNRHR / LHCGR antibody is available for research use only.



SDS-PAGE analysis of purified, BSA-free recombinant GNRHR / LHCGR antibody (clone GNRHR/2982R) as confirmation of integrity and purity.

Description

Recognizes an epitope on the extracellular domain of gonadotropin releasing hormone (GnRH) receptor or luteinizing hormone receptor (LHCGR). Lutropin (also designated luteinizing hormone) plays a role in spermatogenesis and ovulation by stimulating the testes and ovaries to produce steroids. Gonadotropin (also designated choriogonadotropin)

production in the placenta maintains estrogen and progesterone levels during the first trimester of pregnancy. Ovaries and testes abundantly express luteinizing hormone/choriogonadotropin receptor. GnRH receptor contains seven hydrophobic transmembrane domains connected by hydrophilic extracellular and intracellular loops characteristic of G-protein coupled receptors. GnRH stimulates the gonadotrophs of the anterior pituitary to secrete luteinizing hormone (LH) as well as follicle-stimulating hormone (FSH). GnRH influences the protective effect of pregnancy and Gonadotropin against breast cancer. The expression of GnRH on breast carcinoma correlates in part to the degree of tumor differentiation. GnRH-positive breast tumors occur more frequently in tumors with greater cell differentiation in premenopausal women. GnRH is present in luteal and granulosa cells as well as in ovarian cell membrane preparations.

Application Notes

Optimal dilution of the recombinant GNRHR / LHCGR antibody should be determined by the researcher.

Immunogen

Recombinant full-length human GNRHR protein was used as the immunogen for this recombinant GNRHR / LHCGR antibody.

Storage

Store the recombinant GNRHR / LHCGR antibody at 2-8oC (with azide) or aliquot and store at -20oC or colder (without azide).