

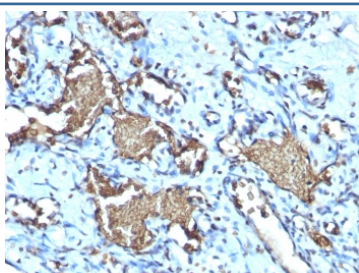
## Recombinant Glycophorin A Antibody / Rabbit Monoclonal [clone GYPA/1725R] (V7275)

Catalog No.	Formulation	Size
V7275-100UG	0.2 mg/ml in 1X PBS with 0.1 mg/ml BSA (US sourced) and 0.05% sodium azide	100 ug
V7275-20UG	0.2 mg/ml in 1X PBS with 0.1 mg/ml BSA (US sourced) and 0.05% sodium azide	20 ug
V7275SAF-100UG	1 mg/ml in 1X PBS; BSA free, sodium azide free	100 ug
V7275IHC-7ML	Prediluted in 1X PBS with 0.1 mg/ml BSA (US sourced) and 0.05% sodium azide; *For IHC use only*	7 ml

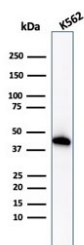
Recombinant RABBIT MONOCLONAL

[Bulk quote request](#)

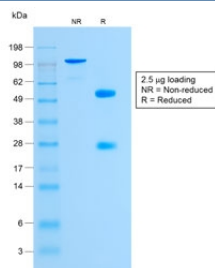
Availability	1-3 business days
Species Reactivity	Human
Format	Purified
Clonality	Recombinant Rabbit Monoclonal
Isotype	Rabbit IgG, kappa
Clone Name	GYPA/1725R
Purity	Protein A affinity chromatography
UniProt	P02724
Localization	Cytoplasmic, membranous
Applications	Western Blot : 1-2ug/ml Immunohistochemistry (FFPE) : 1-2ug/ml for 30 min at RT
Limitations	This recombinant Glycophorin A antibody is available for research use only.



IHC testing of FFPE human angiosarcoma with recombinant Glycophorin A antibody (clone GYPA/1725R). Required HIER: boil tissue sections in pH 9 10mM Tris with 1mM EDTA for 10-20 min.



Western blot testing of human K562 cell lysate with Glycophorin A antibody (clone GYPA/1725R). Expected molecular weight: routinely observed at ~16/38 kDa.



SDS-PAGE analysis of purified, BSA-free recombinant Glycophorin A antibody (clone GYPA/1725R) as confirmation of integrity and purity.

## Description

Glycophorin A is the major intrinsic membrane protein of the erythrocyte. The N-terminal glycosylated segment, which lies outside the erythrocyte membrane, has MN blood group receptors. Appears to be important for the function of SLC4A1 and is required for high activity of SLC4A1. May be involved in translocation of SLC4A1 to the plasma membrane. Is a receptor for influenza virus. Is a receptor for Plasmodium falciparum erythrocyte-binding antigen 175 (EBA-175); binding of EBA-175 is dependent on sialic acid residues of the O-linked glycans. Appears to be a receptor for Hepatitis A virus (HAV). [UniProt]

## Application Notes

Optimal dilution of the recombinant Glycophorin A antibody should be determined by the researcher.

1. The prediluted format is supplied in a dropper bottle and is optimized for use in IHC. After epitope retrieval step (if required), drip mAb solution onto the tissue section and incubate at RT for 30 min.

## Immunogen

Recombinant human GPA protein was used as the immunogen for the recombinant Glycophorin A antibody.

## Storage

Store the recombinant Glycophorin A antibody at 2-8°C (with azide) or aliquot and store at -20°C or colder (without azide).