

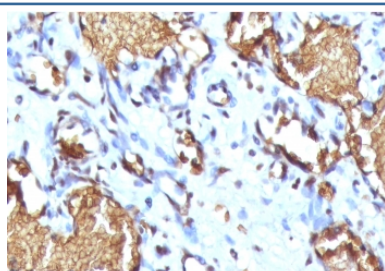
Recombinant Glycophorin A Antibody / GYPA / Rabbit Monoclonal [clone SGPA35-2R] (V3725)

Catalog No.	Formulation	Size
V3725-100UG	0.2 mg/ml in 1X PBS with 0.1 mg/ml BSA (US sourced) and 0.05% sodium azide	100 ug
V3725-20UG	0.2 mg/ml in 1X PBS with 0.1 mg/ml BSA (US sourced) and 0.05% sodium azide	20 ug
V3725SAF-100UG	1 mg/ml in 1X PBS; BSA free, sodium azide free	100 ug
V3725IHC-7ML	Prediluted in 1X PBS with 0.1 mg/ml BSA (US sourced) and 0.05% sodium azide; *For IHC use only*	7 ml

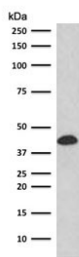
Recombinant **RABBIT MONOCLONAL**

[Bulk quote request](#)

Availability	1-3 business days
Species Reactivity	Human
Format	Purified
Clonality	Recombinant Rabbit Monoclonal
Isotype	Rabbit IgG, kappa
Clone Name	SGPA35-2R
Purity	Protein A affinity chromatography
UniProt	P02724
Localization	Cytoplasmic, membranous
Applications	Western Blot : 1-2ug/ml Immunohistochemistry (FFPE) : 0.25-0.5ug/ml for 30 min at RT Prediluted IHC Only Format : incubate for 30 min at RT (1)
Limitations	This recombinant Glycophorin A antibody is available for research use only.



IHC staining of FFPE human angiosarcoma with recombinant Glycophorin A antibody (clone SGPA35-2R). Required HIER: steam section in pH 9 10mM Tris with 1mM EDTA for 20 min and allow to cool prior to staining.



Western blot testing of human K562 cell lysate with Glycophorin A antibody (clone SGPA35-2R). Expected molecular weight: routinely observed at ~16/38 kDa.

Description

Glycophorin A (MNS blood group), also known as GYPA, is a protein which in humans is encoded by the GYPA gene. GYPA has also been designated CD235a. Glycophorins A (GYPA) and B (GYPB) are major sialoglycoproteins of the human erythrocyte membrane which bear the antigenic determinants for the MN and Ss blood groups. [Wiki]

Application Notes

The stated application concentrations are suggested starting points. Titration of the recombinant Glycophorin A antibody may be required due to differences in protocols and secondary/substrate sensitivity.

1. The prediluted format is supplied in a dropper bottle and is optimized for use in IHC. After epitope retrieval step (if required), drip mAb solution onto the tissue section and incubate at RT for 30 min.

Immunogen

Recombinant human GYPA protein was used as the immunogen for the recombinant Glycophorin A antibody.

Storage

Store the recombinant Glycophorin A antibody at 2-8°C (with azide) or aliquot and store at -20°C or colder (without azide).