

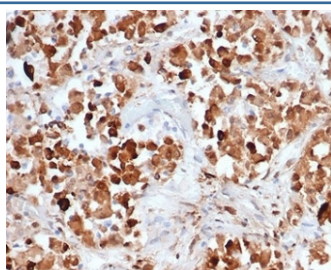
Recombinant GH1 Antibody / Growth Hormone [clone rGH/4887] (V9343)

| Catalog No. | Formulation | Size |
|----------------|---|--------|
| V9343-100UG | 0.2 mg/ml in 1X PBS with 0.1 mg/ml BSA (US sourced), 0.05% sodium azide | 100 ug |
| V9343-20UG | 0.2 mg/ml in 1X PBS with 0.1 mg/ml BSA (US sourced), 0.05% sodium azide | 20 ug |
| V9343SAF-100UG | 1 mg/ml in 1X PBS; BSA free, sodium azide free | 100 ug |

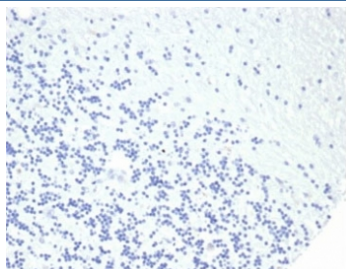
Recombinant **MOUSE MONOCLONAL**

[Bulk quote request](#)

| | |
|---------------------------|---|
| Availability | 1-3 business days |
| Species Reactivity | Human |
| Format | Purified |
| Clonality | Recombinant Mouse Monoclonal |
| Isotype | Mouse IgG1, kappa |
| Clone Name | rGH/4887 |
| Purity | Protein A/G affinity |
| UniProt | P01241 |
| Localization | Cytoplasm |
| Applications | Immunohistochemistry (FFPE) : 1-2ug/ml |
| Limitations | This recombinant GH1 antibody is available for research use only. |



IHC staining of FFPE human pituitary tissue with recombinant GH1 antibody (clone rGH/4887). HIER: boil tissue sections in pH 9 10mM Tris with 1mM EDTA for 20 min and allow to cool before testing.



Negative control: IHC staining of FFPE human brain tissue using recombinant GH1 antibody (clone rGH/4887) at 2ug/ml in PBS for 30min RT. HIER: boil tissue sections in pH 9 10mM Tris with 1mM EDTA for 20 min and allow to cool before testing.

Description

Pituitary growth hormone (GH) plays a crucial role in stimulating and controlling the growth, metabolism and differentiation of many mammalian cell types by modulating the synthesis of multiple mRNA species. These effects are mediated by the binding of GH to its membrane-bound receptor, GHR, and involve a phosphorylation cascade that results in the modulation of numerous signaling pathways. GH is synthesized by acidophilic or somatotrophic cells of the anterior pituitary gland. Anti-GH is a useful marker in classification of pituitary tumors and the study of pituitary disease (acromegaly).

Application Notes

Optimal dilution of the recombinant GH1 antibody should be determined by the researcher.

Immunogen

Recombinant full-length human pituitary growth hormone protein was used as the immunogen for the recombinant GH1 antibody.

Storage

Aliquot the recombinant GH1 antibody and store frozen at -20oC or colder. Avoid repeated freeze-thaw cycles.