

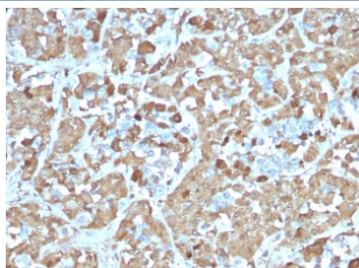
## Recombinant GH Antibody (pituitary) / Growth Hormone [clone rGH/1450] (V7483)

Catalog No.	Formulation	Size
V7483-100UG	0.2 mg/ml in 1X PBS with 0.1 mg/ml BSA (US sourced) and 0.05% sodium azide	100 ug
V7483-20UG	0.2 mg/ml in 1X PBS with 0.1 mg/ml BSA (US sourced) and 0.05% sodium azide	20 ug
V7483SAF-100UG	1 mg/ml in 1X PBS; BSA free, sodium azide free	100 ug
V7483IHC-7ML	Prediluted in 1X PBS with 0.1 mg/ml BSA (US sourced) and 0.05% sodium azide; *For IHC use only*	7 ml

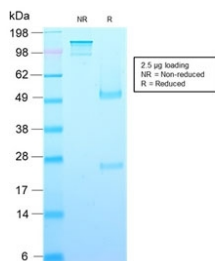
### Recombinant MOUSE MONOCLONAL

[Bulk quote request](#)

Species Reactivity	Human
Format	Purified
Clonality	Recombinant Mouse Monoclonal
Isotype	Mouse IgG1, kappa
Clone Name	rGH/1450
Purity	Protein G affinity chromatography
UniProt	P01241
Localization	Cytoplasmic
Applications	Immunohistochemistry (FFPE) : 0.5-1ug/ml for 30 min at RT
Limitations	This recombinant GH antibody is available for research use only.



IHC testing of FFPE human pituitary gland with recombinant GH antibody (clone rGH/1450). Required HIER: boil tissue sections in pH 9 10mM Tris with 1mM EDTA for 10-20 min.



SDS-PAGE analysis of purified, BSA-free recombinant GH antibody (clone rGH/1450) as confirmation of integrity and purity.

## Description

Pituitary growth hormone (GH) plays a crucial role in stimulating and controlling the growth, metabolism and differentiation of many mammalian cell types by modulating the synthesis of multiple mRNA species. These effects are mediated by the binding of GH to its membrane-bound receptor, GHR, and involve a phosphorylation cascade that results in the modulation of numerous signaling pathways. GH is synthesized by acidophilic or somatotrophic cells of the anterior pituitary gland. Anti-GH is a useful marker in classification of pituitary tumors and the study of pituitary disease (acromegaly).

## Application Notes

The concentration stated for each application is a general starting point. Variations in protocols, secondaries and substrates may require the recombinant GH antibody to be titrated up or down for optimal performance.

1. The prediluted format is supplied in a dropper bottle and is optimized for use in IHC. After epitope retrieval step (if required), drip mAb solution onto the tissue section and incubate at RT for 30 min.

## Immunogen

A human partial recombinant protein corresponding to amino acids 58-187 was used as the immunogen for this recombinant GH antibody.

## Storage

Store the recombinant GH antibody at 2-8°C (with azide) or aliquot and store at -20°C or colder (without azide).

## References (1)