

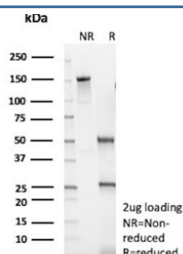
## Recombinant GATA3 Antibody / GATA-binding factor 3 [clone rGATA3/9107] (V5519)

Catalog No.	Formulation	Size
V5519-100UG	0.2 mg/ml in 1X PBS with 0.1 mg/ml BSA (US sourced), 0.05% sodium azide	100 ug
V5519-20UG	0.2 mg/ml in 1X PBS with 0.1 mg/ml BSA (US sourced), 0.05% sodium azide	20 ug
V5519SAF-100UG	1 mg/ml in 1X PBS; BSA free, sodium azide free	100 ug

### Recombinant MOUSE MONOCLONAL

[Bulk quote request](#)

Availability	1-3 business days
Species Reactivity	Human
Format	Purified
Clonality	Recombinant Mouse Monoclonal
Isotype	Mouse IgG2b, kappa
Clone Name	rGATA3/9107
Purity	Protein A/G affinity
UniProt	P23771
Localization	Nucleus
Applications	Immunohistochemistry (FFPE) : 1-2ug/ml
Limitations	This recombinant GATA3 antibody is available for research use only.



SDS-PAGE analysis of purified, BSA-free GATA3 antibody (clone rGATA3/9107) as confirmation of integrity and purity.

## Description

GATA-3 (GATA binding protein 3) is a member of the GATA family of transcription factors. This 50kDa nuclear protein regulates the development and subsequent maintenance of a variety of human tissues, including hematopoietic cells, skin, kidney, mammary gland, and the central nervous system. Among several other roles, GATA-3 involved in luminal

cell differentiation in the mammary gland and appears to control a set of genes involved in the differentiation and proliferation of breast cancer. The expression of GATA-3 is associated with the expression of estrogen receptor-alpha (ER) in breast cancer. GATA-3 has been shown to be a novel marker for bladder cancer. The study demonstrated that GATA-3 stained 67% of urothelial Carcinomas, but none of prostate or renal carcinomas.

## **Application Notes**

Optimal dilution of the recombinant GATA3 antibody should be determined by the researcher.

## **Immunogen**

A recombinant fragment (within amino acids 200-300) of human GATA-3 protein was used as the immunogen for the recombinant GATA3 antibody.

## **Storage**

Aliquot the recombinant GATA3 antibody and store frozen at -20oC or colder. Avoid repeated freeze-thaw cycles.