

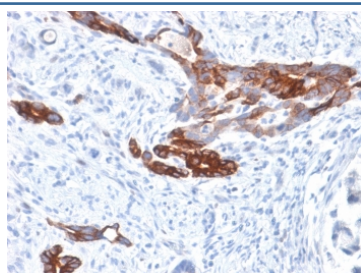
Recombinant Gastric Mucin Antibody / MUC6 / Rabbit Monoclonal [clone MUC6/1553R] (V3722)

Catalog No.	Formulation	Size
V3722-100UG	0.2 mg/ml in 1X PBS with 0.1 mg/ml BSA (US sourced) and 0.05% sodium azide	100 ug
V3722-20UG	0.2 mg/ml in 1X PBS with 0.1 mg/ml BSA (US sourced) and 0.05% sodium azide	20 ug
V3722SAF-100UG	1 mg/ml in 1X PBS; BSA free, sodium azide free	100 ug
V3722IHC-7ML	Prediluted in 1X PBS with 0.1 mg/ml BSA (US sourced) and 0.05% sodium azide; *For IHC use only*	7 ml

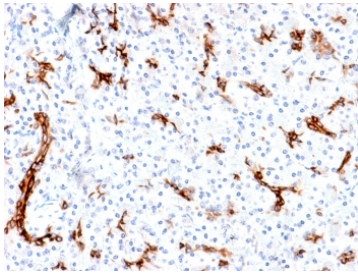
Recombinant **RABBIT MONOCLONAL**

[Bulk quote request](#)

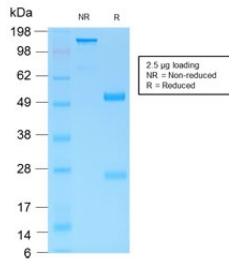
Availability	1-3 business days
Species Reactivity	Human
Format	Purified
Host	Rabbit
Clonality	Recombinant Rabbit Monoclonal
Isotype	Rabbit IgG, kappa
Clone Name	MUC6/1553R
Purity	Protein A affinity chromatography
UniProt	Q6W4X9
Localization	Cytoplasmic & secreted
Applications	Immunohistochemistry (FFPE) : 2-4ug/ml for 30 min at RT (1)
Limitations	This recombinant Gastric Mucin antibody is available for research use only.



IHC staining of FFPE human gastric carcinoma with recombinant Gastric Mucin antibody (clone MUC6/1553R). Required HIER: boil tissue sections in pH 9 10mM Tris with 1mM EDTA for 10-20 min followed by cooling at RT for 20 min.



IHC staining of FFPE human pancreas with recombinant Gastric Mucin antibody (clone MUC6/1553R). Required HIER: boil tissue sections in pH 9 10mM Tris with 1mM EDTA for 10-20 min followed by cooling at RT for 20 min.



SDS-PAGE analysis of purified, BSA-free recombinant Gastric Mucin antibody (clone MUC6/1553R) as confirmation of integrity and purity.

Description

MUC6 or gastric mucin is a secreted glycoprotein that plays an essential role in epithelial cyto-protection from acid, proteases, pathogenic microorganisms, and mechanical trauma in the gastrointestinal tract. Mucin 6 expression is highest in the stomach and gall bladder, with lower expression in the terminal ileum and right colon. In gastric cancer, Mucin 6 has an altered expression. In normal stomach, Mucin 6 is associated with Lewis type 2; Mucin 6 is also expressed in gastric metaplasia, duodenum and pancreas. Mucin 6 is a secretory mucin, located in the deeper mucosal folds of human gall bladder, and its expression is altered with increasing degrees of inflammation.

Application Notes

Optimal dilution of the recombinant Gastric Mucin antibody should be determined by the researcher.

1. The prediluted format is supplied in a dropper bottle and is optimized for use in IHC. After epitope retrieval step (if required), drip mAb solution onto the tissue section and incubate at RT for 30 min.

Immunogen

A peptide from the MUC6 tandem repeat sequence was used as the immunogen for the recombinant Gastric Mucin antibody.

Storage

Store the recombinant Gastric Mucin antibody at 2-8°C (with azide) or aliquot and store at -20°C or colder (without azide).

