

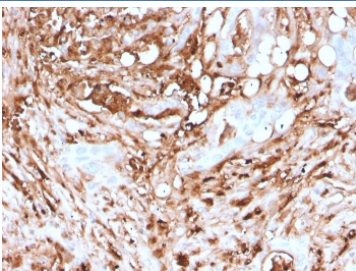
Recombinant FTL Antibody / Ferritin light chain [clone rFTL/1388] (V7793)

Catalog No.	Formulation	Size
V7793-100UG	0.2 mg/ml in 1X PBS with 0.1 mg/ml BSA (US sourced) and 0.05% sodium azide	100 ug
V7793-20UG	0.2 mg/ml in 1X PBS with 0.1 mg/ml BSA (US sourced) and 0.05% sodium azide	20 ug
V7793SAF-100UG	1 mg/ml in 1X PBS; BSA free, sodium azide free	100 ug

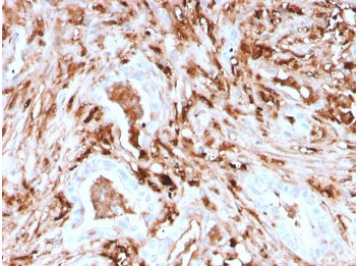
Recombinant **MOUSE MONOCLONAL**

[Bulk quote request](#)

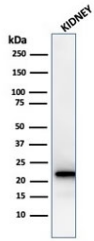
Availability	1-3 business days
Species Reactivity	Human
Format	Purified
Host	Mouse
Clonality	Recombinant Mouse Monoclonal
Isotype	Mouse IgG1, kappa
Clone Name	rFTL/1388
Purity	Protein G affinity chromatography
UniProt	P02792
Localization	Cytoplasmic
Applications	Immunohistochemistry (FFPE) : 0.1-0.2ug/ml Western Blot : 1-2ug/ml
Limitations	This recombinant FTL antibody is available for research use only.



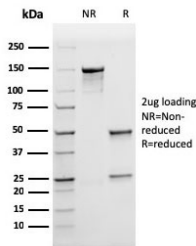
IHC staining of FFPE human pancreas with recombinant FTL antibody (clone rFTL/1388). HIER: boil tissue sections in pH 9 10mM Tris with 1mM EDTA for 10-20 min and allow to cool before testing.



IHC staining of FFPE human pancreas with recombinant FTL antibody (clone rFTL/1388). HIER: boil tissue sections in pH 9 10mM Tris with 1mM EDTA for 10-20 min and allow to cool before testing.



Western blot testing of human kidney lysate with recombinant FTL antibody (clone rFTL/1388). Predicted molecular weight: ~20 kDa.



SDS-PAGE analysis of purified, BSA-free recombinant FTL antibody (clone rFTL/1388) as confirmation of integrity and purity.

Description

Mammalian ferritins consist of 24 subunits made up of 2 types of polypeptide chains, ferritin heavy chain and ferritin light chain. Ferritin heavy chains catalyze the first step in iron storage, the oxidation of Fe (II), whereas ferritin light chains promote the nucleation of ferrihydrite, enabling storage of Fe (III). Light chain ferritin is involved in cataracts by at least two mechanisms, hereditary hyperferritinemia cataract syndrome, in which light chain ferritin is overexpressed, and oxidative stress, an important factor in the development of ageing-related cataracts.

Application Notes

Optimal dilution of the recombinant FTL antibody should be determined by the researcher.

Immunogen

A human recombinant partial protein (amino acids 38-165) was used as the immunogen for the recombinant FTL antibody.

Storage

Store the recombinant FTL antibody at 2-8oC (with azide) or aliquot and store at -20oC or colder (without azide).

