

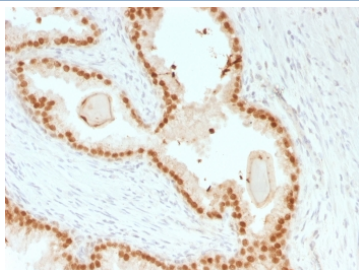
Recombinant FOXA1 Antibody [clone rFOXA1/1515] (V3621)

Catalog No.	Formulation	Size
V3621-100UG	0.2 mg/ml in 1X PBS with 0.1 mg/ml BSA (US sourced) and 0.05% sodium azide	100 ug
V3621-20UG	0.2 mg/ml in 1X PBS with 0.1 mg/ml BSA (US sourced) and 0.05% sodium azide	20 ug
V3621SAF-100UG	1 mg/ml in 1X PBS; BSA free, sodium azide free	100 ug
V3621IHC-7ML	Prediluted in 1X PBS with 0.1 mg/ml BSA (US sourced) and 0.05% sodium azide; *For IHC use only*	7 ml

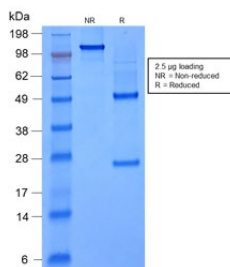
Recombinant **MOUSE MONOCLONAL**

[Bulk quote request](#)

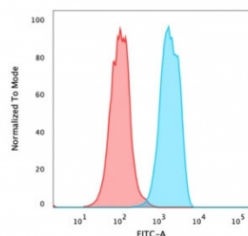
Species Reactivity	Human, Rat
Format	Purified
Clonality	Recombinant Mouse Monoclonal
Isotype	Mouse IgG1, kappa
Clone Name	rFOXA1/1515
Purity	Protein G affinity chromatography
UniProt	P55317
Localization	Nuclear
Applications	Immunohistochemistry (FFPE) : 1-2ug/ml for 30 min at RT Flow Cytometry : 1-2ug/million cells
Limitations	This recombinant FOXA1 antibody is available for research use only.



IHC testing of FFPE human prostate carcinoma with recombinant FOXA1 antibody (clone rFOXA1/1515). HIER: boil sections in 10mM Tris with 1mM EDTA, pH9 for 10-20 min followed by cooling at RT for 20 min.



SDS-PAGE analysis of purified, BSA-free recombinant FOXA1 antibody (clone rFOXA1/1515) as confirmation of integrity and purity.



FACS testing of PFA-fixed human MCF-7 cells with recombinant FOXA1 antibody (clone rFOXA1/1515); Red=isotype control, Blue= FOXA1 antibody.

Description

Transcription factor that is involved in embryonic development, establishment of tissue-specific gene expression and regulation of gene expression in differentiated tissues. Involved in the development of multiple endoderm-derived organ systems such as liver, pancreas, lung and prostate. [UniProt]

Application Notes

The concentration stated for each application is a general starting point. Variations in protocols, secondaries and substrates may require the recombinant FOXA1 antibody to be titrated up or down for optimal performance.

1. The prediluted format is supplied in a dropper bottle and is optimized for use in IHC. After epitope retrieval step (if required), drip mAb solution onto the tissue section and incubate at RT for 30 min.

Immunogen

A human recombinant partial protein corresponding to amino acids 372-472 was used as the immunogen for this recombinant FOXA1 antibody.

Storage

Store the recombinant FOXA1 antibody at 2-8°C (with azide) or aliquot and store at -20°C or colder (without azide).

References (1)