

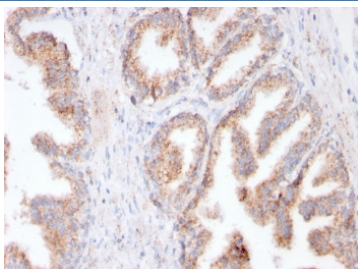
Recombinant FOLH1 Antibody / Folate Hydrolase 1 [clone FOLH1/3149R] (V7753)

Catalog No.	Formulation	Size
V7753-100UG	0.2 mg/ml in 1X PBS with 0.1 mg/ml BSA (US sourced) and 0.05% sodium azide	100 ug
V7753-20UG	0.2 mg/ml in 1X PBS with 0.1 mg/ml BSA (US sourced) and 0.05% sodium azide	20 ug
V7753SAF-100UG	1 mg/ml in 1X PBS; BSA free, sodium azide free	100 ug

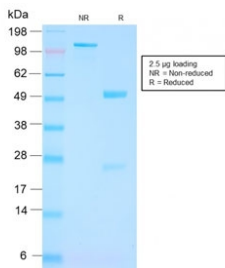
Recombinant **RABBIT MONOCLONAL**

[Bulk quote request](#)

Availability	1-3 business days
Species Reactivity	Human
Format	Purified
Host	Rabbit
Clonality	Recombinant Rabbit Monoclonal
Isotype	Rabbit IgG
Clone Name	FOLH1/3149R
Purity	Protein A affinity chromatography
UniProt	Q04609
Localization	Cytoplasmic, cell surface
Applications	Immunohistochemistry (FFPE) : 1-2ug/ml
Limitations	This recombinant FOLH1 antibody is available for research use only.



IHC testing of FFPE human prostate cancer with recombinant FOLH1 antibody (clone FOLH1/3149R). HIER: boil tissue sections in pH 9 10mM Tris with 1mM EDTA for 10-20 min and allow to cool before testing.



SDS-PAGE analysis of purified, BSA-free recombinant FOLH1 antibody as confirmation of integrity and purity.

Description

Folate hydrolase 1 (FOLH1), also known as Prostate-specific membrane antigen (PSMA), is a type II transmembrane glycoprotein belonging to the M28 peptidase family. FOLH1 has two enzymatic activities, one as a prostate-specific integral membrane folate hydrolase and the other as a carboxypeptidase. In the prostate the protein is up-regulated in cancerous cells and is used as an effective diagnostic and prognostic indicator of prostate cancer.

Application Notes

Optimal dilution of the recombinant FOLH1 antibody should be determined by the researcher.

Immunogen

A portion of amino acids 232-433 from the human protein were used as the immunogen for this recombinant FOLH1 antibody.

Storage

Store the recombinant FOLH1 antibody at 2-8°C (with azide) or aliquot and store at -20°C or colder (without azide).