

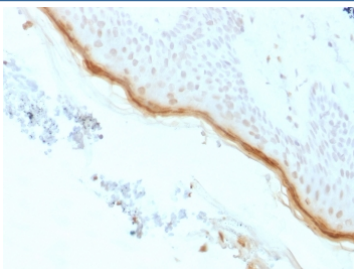
## Recombinant Filaggrin Antibody [clone rFLG/1561] (V3611)

Catalog No.	Formulation	Size
V3611-100UG	0.2 mg/ml in 1X PBS with 0.1 mg/ml BSA (US sourced) and 0.05% sodium azide	100 ug
V3611-20UG	0.2 mg/ml in 1X PBS with 0.1 mg/ml BSA (US sourced) and 0.05% sodium azide	20 ug
V3611SAF-100UG	1 mg/ml in 1X PBS; BSA free, sodium azide free	100 ug
V3611IHC-7ML	Prediluted in 1X PBS with 0.1 mg/ml BSA (US sourced) and 0.05% sodium azide; *For IHC use only*	7 ml

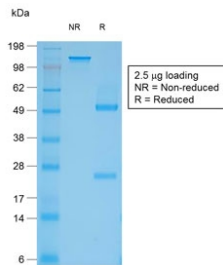
Recombinant **MOUSE MONOCLONAL**

[Bulk quote request](#)

<b>Availability</b>	1-3 business days
<b>Species Reactivity</b>	Human
<b>Format</b>	Purified
<b>Clonality</b>	Recombinant Mouse Monoclonal
<b>Isotype</b>	Mouse IgG1, kappa
<b>Clone Name</b>	rFLG/1561
<b>Purity</b>	Protein G affinity chromatography
<b>UniProt</b>	P20930
<b>Localization</b>	Cytoplasmic
<b>Applications</b>	Immunohistochemistry (FFPE) : 0.5-1ug/ml for 30 min at RT
<b>Limitations</b>	This recombinant Filaggrin antibody is available for research use only.



IHC testing of FFPE human skin with recombinant Filaggrin antibody (clone rFLG/1561). Required HIER: boil tissue sections in 10mM citrate buffer, pH 6, for 10-20 min followed by cooling at RT for 20 min.



SDS-PAGE analysis of purified, BSA-free recombinant Filaggrin antibody (clone rFLG/1561) as confirmation of integrity and purity.

## Description

Filaggrin (FLG) is an intermediate filament-associated protein that aggregates keratin intermediate filaments in mammalian epidermis. It is initially synthesized as a polyprotein precursor, profilaggrin (consisting of multiple Filaggrin units of 324 aa each), which is localized in keratohyalin granules, and is subsequently proteolytically processed into individual functional Filaggrin molecules. Active Filaggrin is present at a level of the epidermis where keratinocytes are in transition between the live nucleated granular layer and the anucleate cornified layer, suggesting that filaggrin aids in the terminal differentiation process by facilitating apoptotic machinery.

## Application Notes

Optimal dilution of the recombinant Filaggrin antibody should be determined by the researcher.

1. The prediluted format is supplied in a dropper bottle and is optimized for use in IHC. After epitope retrieval step (if required), drip mAb solution onto the tissue section and incubate at RT for 30 min.

## Immunogen

Amino acids 198-288 of human FLG were used as the immunogen for this recombinant Filaggrin antibody.

## Storage

Store the recombinant Filaggrin antibody at 2-8°C (with azide) or aliquot and store at -20°C or colder (without azide).