

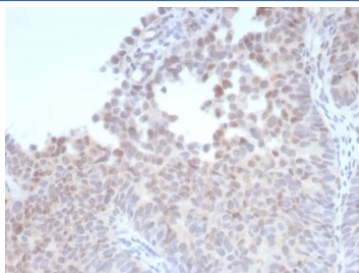
Recombinant Estrogen Receptor beta 1 Antibody [clone ESR2/9251R] (V5610)

Catalog No.	Formulation	Size
V5610-100UG	0.2 mg/ml in 1X PBS with 0.1 mg/ml BSA (US sourced), 0.05% sodium azide	100 ug
V5610-20UG	0.2 mg/ml in 1X PBS with 0.1 mg/ml BSA (US sourced), 0.05% sodium azide	20 ug
V5610SAF-100UG	1 mg/ml in 1X PBS; BSA free, sodium azide free	100 ug

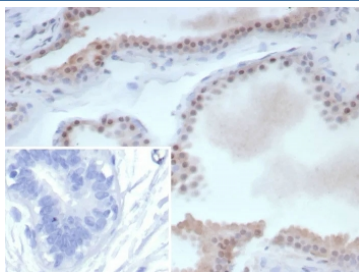
Recombinant **RABBIT MONOCLONAL**

[Bulk quote request](#)

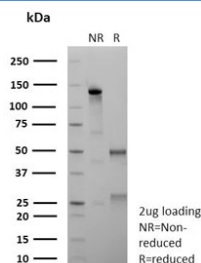
Availability	1-3 business days
Species Reactivity	Human
Format	Purified
Clonality	Recombinant Rabbit Monoclonal
Isotype	Rabbit IgG, kappa
Clone Name	ESR2/9251R
Purity	Protein A/G affinity
UniProt	Q92731
Localization	Nucleus
Applications	Immunohistochemistry (FFPE) : 1-2ug/ml
Limitations	This recombinant Estrogen Receptor beta 1 antibody is available for research use only.



IHC staining of FFPE human bladder tissue with recombinant Estrogen Receptor beta 1 antibody (clone ESR2/9251R). HIER: boil tissue sections in pH 9 10mM Tris with 1mM EDTA for 20 min and allow to cool before testing.



IHC staining of FFPE human breast cancer tissue with recombinant Estrogen Receptor beta 1 antibody (clone ESR2/9251R). Inset: PBS used in place of primary Ab (secondary Ab negative control). HIER: boil tissue sections in pH 9 10mM Tris with 1mM EDTA for 20 min and allow to cool before testing.



SDS-PAGE analysis of purified, BSA-free recombinant Estrogen Receptor beta 1 antibody (clone ESR2/9251R) as confirmation of integrity and purity.

Description

Estrogen receptors (ER) are members of the steroid/thyroid hormone receptor superfamily of ligand-activated transcription factors. Estrogen receptors, including ER-alpha and ER-beta, contain DNA binding and ligand binding domains and are critically involved in regulating the normal function of reproductive tissues. They are located in the nucleus, though some estrogen receptors associate with the cell surface membrane and can be rapidly activated by exposure of cells to estrogen. ER-alpha and ER-beta are differentially activated by various ligands. Receptor-ligand interactions trigger a cascade of events, including dissociation from heat shock proteins, receptor dimerization, phosphorylation and the association of the hormone activated receptor with specific regulatory elements in target genes. Evidence suggests that ER-alpha and ER-beta may be regulated by distinct mechanisms even though they share many functional characteristics.

Application Notes

Optimal dilution of the recombinant Estrogen Receptor beta 1 antibody should be determined by the researcher.

Immunogen

A C-terminus fragment of recombinant human estrogen receptor beta protein was used as the immunogen for the recombinant Estrogen Receptor beta 1 antibody.

Storage

Aliquot the recombinant Estrogen Receptor beta 1 antibody and store frozen at -20oC or colder. Avoid repeated freeze-thaw cycles.