

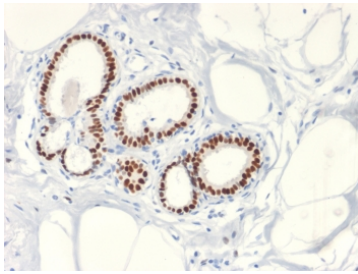
Recombinant Estrogen Receptor Antibody (alpha) [clone ESR1/2299R] (V3581)

Catalog No.	Formulation	Size
V3581-100UG	0.2 mg/ml in 1X PBS with 0.1 mg/ml BSA (US sourced) and 0.05% sodium azide	100 ug
V3581-20UG	0.2 mg/ml in 1X PBS with 0.1 mg/ml BSA (US sourced) and 0.05% sodium azide	20 ug
V3581SAF-100UG	1 mg/ml in 1X PBS; BSA free, sodium azide free	100 ug
V3581IHC-7ML	Prediluted in 1X PBS with 0.1 mg/ml BSA (US sourced) and 0.05% sodium azide; *For IHC use only*	7 ml

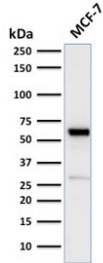
Recombinant **RABBIT MONOCLONAL**

[Bulk quote request](#)

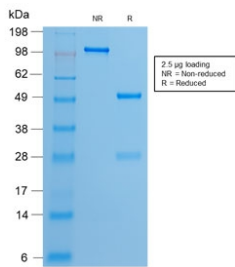
Availability	1-3 business days
Species Reactivity	Human
Format	Purified
Clonality	Recombinant Rabbit Monoclonal
Isotype	Rabbit IgG, kappa
Clone Name	ESR1/2299R
Purity	Protein A affinity chromatography
UniProt	P03372
Localization	Nuclear
Applications	Western Blot : 1-2ug/ml Flow Cytometry : 1-2ug/million cells Immunohistochemistry (FFPE) : 1-2ug/ml for 30 min at RT Prediluted IHC Only Format : incubate for 30 min at RT (1)
Limitations	This recombinant Estrogen Receptor antibody is available for research use only.



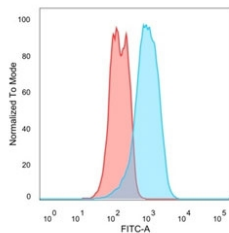
IHC testing of FFPE human breast cancer with Estrogen Receptor antibody (clone ESR1/2299R). Required HIER: boil tissue sections in 10mM citrate buffer, pH 6, for 10-20 min followed by cooling at RT for 20 min.



Western blot testing of human MCF7 cell lysate with recombinant Estrogen Receptor antibody (clone ESR1/2299R). Predicted molecular weight ~67 kDa.



SDS-PAGE analysis of purified, BSA-free recombinant Estrogen Receptor antibody (clone ESR1/2299R) as confirmation of integrity and purity.



Flow cytometry staining of PFA-fixed human MCF7 cells with recombinant Estrogen Receptor antibody; Red=isotype control, Blue= recombinant Estrogen Receptor antibody.

Description

This mAb is specific to ER alpha and shows minimal cross-reaction with other members of the family. ER is an important regulator of growth and differentiation in the mammary gland. Presence of ER in breast tumors indicates an increased likelihood of response to anti-estrogen (e.g. tamoxifen) therapy.

Application Notes

The optimal dilution of the recombinant Estrogen Receptor antibody for each application should be determined by the researcher.

1. The prediluted format is supplied in a dropper bottle and is optimized for use in IHC. After epitope retrieval step (if required), drip mAb solution onto the tissue section and incubate at RT for 30 min.

Immunogen

Human Estrogen Receptor alpha protein was used as the immunogen for this recombinant Estrogen Receptor antibody.

Storage

Store the recombinant Estrogen Receptor antibody at 2-8oC (with azide) or aliquot and store at -20oC or colder (without azide).