

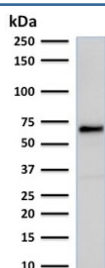
Recombinant Estrogen Receptor alpha Antibody [clone rESR1/1935] (V3582)

Catalog No.	Formulation	Size
V3582-100UG	0.2 mg/ml in 1X PBS with 0.1 mg/ml BSA (US sourced) and 0.05% sodium azide	100 ug
V3582-20UG	0.2 mg/ml in 1X PBS with 0.1 mg/ml BSA (US sourced) and 0.05% sodium azide	20 ug
V3582SAF-100UG	1 mg/ml in 1X PBS; BSA free, sodium azide free	100 ug
V3582IHC-7ML	Prediluted in 1X PBS with 0.1 mg/ml BSA (US sourced) and 0.05% sodium azide; *For IHC use only*	7 ml

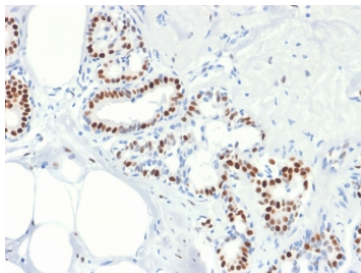
Recombinant MOUSE MONOCLONAL

[Bulk quote request](#)

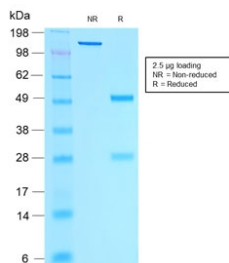
Availability	1-3 business days
Species Reactivity	Human
Format	Purified
Host	Mouse
Clonality	Recombinant Mouse Monoclonal
Isotype	Mouse IgG1, kappa
Clone Name	rESR1/1935
Purity	Protein G affinity chromatography
UniProt	P03372
Localization	Nuclear
Applications	Western Blot : 1-2ug/ml Immunohistochemistry (FFPE) : 1-2ug/ml for 30 min at RT
Limitations	This recombinant Estrogen Receptor alpha antibody is available for research use only.



Western blot testing of MCF7 cell lysate with recombinant Estrogen Receptor alpha antibody. Predicted molecular weight ~66 kDa.



IHC testing of FFPE human breast cancer with Estrogen Receptor alpha antibody (clone rESR1/1935). Required HIER: boil tissue sections in 10mM citrate buffer, pH 6, for 10-20 min followed by cooling at RT for 20 min.



SDS-PAGE analysis of purified, BSA-free recombinant Estrogen Receptor alpha antibody (clone rESR1/1935) as confirmation of integrity and purity.

Description

This mAb is specific to ER alpha and shows minimal cross-reaction with other members of the family. ER is an important regulator of growth and differentiation in the mammary gland. Presence of ER in breast tumors indicates an increased likelihood of response to anti-estrogen (e.g. tamoxifen) therapy.

Application Notes

The optimal dilution of the recombinant Estrogen Receptor alpha antibody for each application should be determined by the researcher.

1. The prediluted format is supplied in a dropper bottle and is optimized for use in IHC. After epitope retrieval step (if required), drip mAb solution onto the tissue section and incubate at RT for 30 min.

Immunogen

Human Estrogen Receptor alpha protein was used as the immunogen for this recombinant Estrogen Receptor alpha antibody.

Storage

Store the recombinant Estrogen Receptor alpha antibody at 2-8°C (with azide) or aliquot and store at -20°C or colder (without azide).