

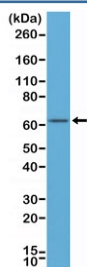
Recombinant Estrogen Receptor alpha Antibody / N-Terminal Region [clone RM292] (R20308)

Catalog No.	Formulation	Size
R20308-0.1ML	Antibody in PBS with 50% glycerol, 1% BSA and 0.09% sodium azide	100 ul

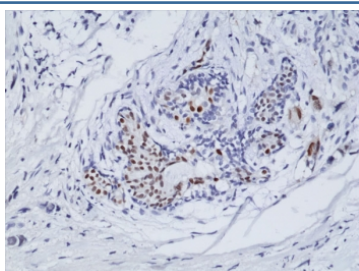
Recombinant **RABBIT MONOCLONAL**

[Bulk quote request](#)

Availability	1-3 business days
Species Reactivity	Human
Format	Purified
Clonality	Recombinant Rabbit Monoclonal
Isotype	Rabbit IgG
Clone Name	RM292
Purity	Protein A purified from animal origin-free supernatant
UniProt	P03372
Localization	Nuclear
Applications	Immunohistochemistry (FFPE) : 1:100-1:200 Western Blot : 1:200-1:500
Limitations	This recombinant Estrogen Receptor alpha antibody is available for research use only.



Western blot of human MCF-7 cell lysates using recombinant Estrogen Receptor alpha antibody at a 1:500 dilution. Predicted molecular weight ~66 kDa.



IHC staining of formalin fixed and paraffin embedded human breast cancer tissue using recombinant Estrogen Receptor alpha antibody at a 1:100 dilution. HIER: steam section in pH6 citrate buffer for 20 min and allow to cool prior to testing.

Description

This antibody reacts to reacts to human ER alpha (Estrogen receptor alpha).

Application Notes

The stated application concentrations are suggested starting points. Titration of the recombinant Estrogen Receptor alpha antibody may be required due to differences in protocols and secondary/substrate sensitivity.

Immunogen

A peptide corresponding to residues near the N-terminus of human ER-alpha was used as the immunogen for the recombinant Estrogen Receptor alpha antibody.

Storage

Store the recombinant Estrogen Receptor alpha antibody at -20oC.