

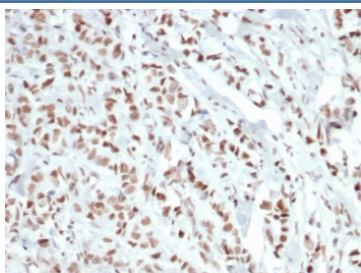
Recombinant Estrogen Receptor alpha Antibody [clone ESR1/6811R] (V9379)

Catalog No.	Formulation	Size
V9379-100UG	0.2 mg/ml in 1X PBS with 0.1 mg/ml BSA (US sourced), 0.05% sodium azide	100 ug
V9379-20UG	0.2 mg/ml in 1X PBS with 0.1 mg/ml BSA (US sourced), 0.05% sodium azide	20 ug
V9379SAF-100UG	1 mg/ml in 1X PBS; BSA free, sodium azide free	100 ug

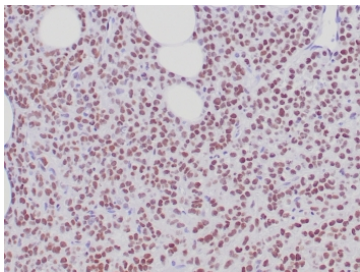
Recombinant **RABBIT MONOCLONAL**

[Bulk quote request](#)

Availability	1-3 business days
Species Reactivity	Human
Format	Purified
Host	Rabbit
Clonality	Recombinant Rabbit Monoclonal
Isotype	Rabbit IgG, kappa
Clone Name	ESR1/6811R
Purity	Protein A/G affinity
UniProt	P03372
Localization	Nuclear
Applications	Immunohistochemistry (FFPE) : 1-2ug/ml
Limitations	This recombinant Estrogen Receptor alpha antibody is available for research use only.



IHC staining of FFPE human breast carcinoma tissue with recombinant Estrogen Receptor alpha antibody (clone ESR1/6811R). HIER: boil tissue sections in pH 9 10mM Tris with 1mM EDTA for 20 min and allow to cool before testing.



IHC staining of FFPE human breast carcinoma tissue with recombinant Estrogen Receptor alpha antibody (clone ESR1/6811R). HIER: boil tissue sections in pH 9 10mM Tris with 1mM EDTA for 20 min and allow to cool before testing.

Description

Estrogen receptor is an important regulator of growth and differentiation in the mammary gland. Presence of ER in breast tumors indicates an increased likelihood of response to anti-estrogen (e.g. tamoxifen) therapy.

Application Notes

Optimal dilution of the Estrogen Receptor alpha antibody should be determined by the researcher.

Immunogen

A recombinant protein fragment was used as the immunogen for the recombinant Estrogen Receptor alpha antibody.

Storage

Aliquot the recombinant Estrogen Receptor alpha antibody and store frozen at -20°C or colder. Avoid repeated freeze-thaw cycles.