

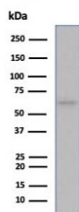
## Recombinant ESR1 Antibody / Estrogen Receptor alpha [clone ESR1/6983R] (V9393)

Catalog No.	Formulation	Size
V9393-100UG	0.2 mg/ml in 1X PBS with 0.1 mg/ml BSA (US sourced), 0.05% sodium azide	100 ug
V9393-20UG	0.2 mg/ml in 1X PBS with 0.1 mg/ml BSA (US sourced), 0.05% sodium azide	20 ug
V9393SAF-100UG	1 mg/ml in 1X PBS; BSA free, sodium azide free	100 ug

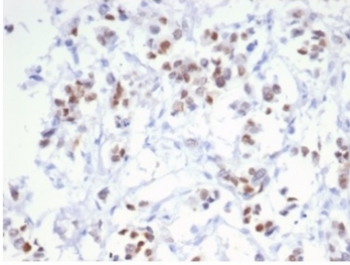
Recombinant **RABBIT MONOCLONAL**

[Bulk quote request](#)

<b>Availability</b>	1-3 business days
<b>Species Reactivity</b>	Human
<b>Format</b>	Purified
<b>Clonality</b>	Recombinant Rabbit Monoclonal
<b>Isotype</b>	Rabbit IgG, kappa
<b>Clone Name</b>	ESR1/6983R
<b>Purity</b>	Protein A/G affinity
<b>UniProt</b>	P03372
<b>Localization</b>	Nucleus
<b>Applications</b>	Western Blot : 1-2ug/ml Immunohistochemistry (FFPE) : 1-2ug/ml
<b>Limitations</b>	This recombinant ESR1 antibody is available for research use only.



Western blot testing of human MCF-7 cell lysate using recombinant ESR1 antibody (clone ESR1/6983R).



IHC staining of FFPE human breast carcinoma tissue with recombinant ESR1 antibody (clone ESR1/6983R). HIER: boil tissue sections in pH 9 10mM Tris with 1mM EDTA for 20 min and allow to cool before testing.

## Description

Estrogen receptor (ER) belongs to the steroid receptor superfamily of nuclear receptors. It is a protein with 553 amino acids. The receptor molecule has three domains, i.e. the central DNA-binding domain, the hormone-binding domain at the C-terminal, and the transcription-activating domain at the N-terminal. ER mediates regulatory functions of female sex steroids, mainly 17 (E2), on growth, differentiation and function in several target tissues, including female and male reproductive tract, mammary gland, and skeletal and cardiovascular systems. Studies have shown ER can be used as a tumor marker, preferentially in combination with an antibody to progesterone receptor, e.g., in the classification of adenocarcinomas.

## Application Notes

Optimal dilution of the recombinant ESR1 antibody should be determined by the researcher.

## Immunogen

A portion of amino acids 495-595 was used as the immunogen for the recombinant ESR1 antibody.

## Storage

Aliquot the recombinant ESR1 antibody and store frozen at -20oC or colder. Avoid repeated freeze-thaw cycles.