

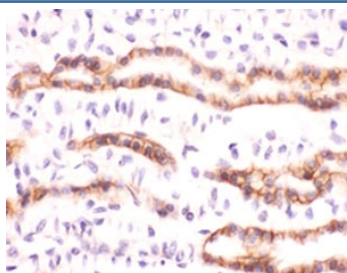
## Recombinant Erythropoietin Antibody / EPO [clone E RTP-1] (V7938)

Catalog No.	Formulation	Size
V7938-100UG	0.2 mg/ml in 1X PBS with 0.1 mg/ml BSA (US sourced) and 0.05% sodium azide	100 ug
V7938-20UG	0.2 mg/ml in 1X PBS with 0.1 mg/ml BSA (US sourced) and 0.05% sodium azide	20 ug
V7938SAF-100UG	1 mg/ml in 1X PBS; BSA free, sodium azide free	100 ug

Recombinant **RABBIT MONOCLONAL**

[Bulk quote request](#)

Availability	1-3 business days
Species Reactivity	Human
Format	Purified
Host	Rabbit
Clonality	Recombinant Rabbit Monoclonal
Isotype	Rabbit IgG, kappa
Clone Name	ERTP-1
Purity	Protein A affinity chromatography
UniProt	P01588
Localization	Cell surface, cytoplasmic
Applications	Immunohistochemistry (FFPE) : 2-4ug/ml
Limitations	This recombinant Erythropoietin antibody is available for research use only.



IHC staining of FFPE human kidney with recombinant Erythropoietin antibody (clone E RTP-1). HIER: boil tissue sections in pH 9 10mM Tris with 1mM EDTA for 10-20 min followed by cooling at RT for 20 min.

## Description

Hormone involved in the regulation of erythrocyte proliferation and differentiation and the maintenance of a physiological level of circulating erythrocyte mass. Binds to EPOR leading to EPOR dimerization and JAK2 activation thereby activating specific downstream effectors, including STAT1 and STAT3. [UniProt]

## Application Notes

The stated application concentrations are suggested starting points. Titration of the Erythropoietin antibody may be required due to differences in protocols and secondary/substrate sensitivity.

## Immunogen

Amino acids 28-162 were used as the immunogen for the recombinant Erythropoietin antibody.

## Storage

Store the recombinant Erythropoietin antibody at 2-8°C (with azide) or aliquot and store at -20°C or colder (without azide).