

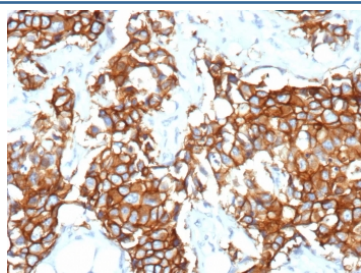
Recombinant ErbB2 Antibody [clone rERBB2/9538] (V5422)

Catalog No.	Formulation	Size
V5422-100UG	0.2 mg/ml in 1X PBS with 0.1 mg/ml BSA (US sourced), 0.05% sodium azide	100 ug
V5422-20UG	0.2 mg/ml in 1X PBS with 0.1 mg/ml BSA (US sourced), 0.05% sodium azide	20 ug
V5422SAF-100UG	1 mg/ml in 1X PBS; BSA free, sodium azide free	100 ug

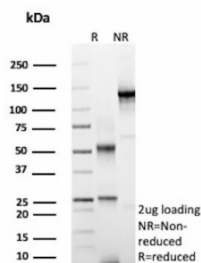
Recombinant **MOUSE MONOCLONAL**

[Bulk quote request](#)

Availability	1-3 business days
Species Reactivity	Human
Format	Purified
Host	Mouse
Clonality	Recombinant Mouse Monoclonal
Isotype	Mouse IgG2b, kappa
Clone Name	rERBB2/9538
Purity	Protein A/G affinity
UniProt	P04626
Localization	Cell Surface
Applications	Immunohistochemistry (FFPE) : 1-2ug/ml
Limitations	This recombinant ErbB2 antibody is available for research use only.



IHC staining of FFPE human breast cancer tissue with recombinant ErbB2 antibody (clone rERBB2/9538). HIER: boil tissue sections in pH 9 10mM Tris with 1mM EDTA for 20 min and allow to cool before testing.



SDS-PAGE analysis of purified, BSA-free recombinant ErbB2 antibody (clone rERBB2/9538) as confirmation of integrity and purity.

Description

C-erbB-2/HER-2 is a member of the EGFR family. Receptors of this family are located on the plasma membrane and consist of an extracellular ligand-binding domain that is connected to a large intracellular domain by a single transmembrane sequence. c-erbB-2/HER-2 protein is over-expressed in a variety of carcinomas especially those of breast and ovary.

Application Notes

Optimal dilution of the recombinant ErbB2 antibody should be determined by the researcher.

Immunogen

Recombinant protein corresponding to the cytoplasmic domain (within amino acids 955-1255) of human c-erbB2/HER-2 was used as the immunogen for the recombinant ErbB2 antibody.

Storage

Aliquot the recombinant ErbB2 antibody and store frozen at -20oC or colder. Avoid repeated freeze-thaw cycles.