

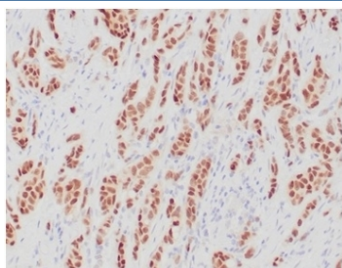
Recombinant ERa Antibody / Estrogen Receptor alpha [clone ESR1/4039R] (V9392)

Catalog No.	Formulation	Size
V9392-100UG	0.2 mg/ml in 1X PBS with 0.1 mg/ml BSA (US sourced), 0.05% sodium azide	100 ug
V9392-20UG	0.2 mg/ml in 1X PBS with 0.1 mg/ml BSA (US sourced), 0.05% sodium azide	20 ug
V9392SAF-100UG	1 mg/ml in 1X PBS; BSA free, sodium azide free	100 ug

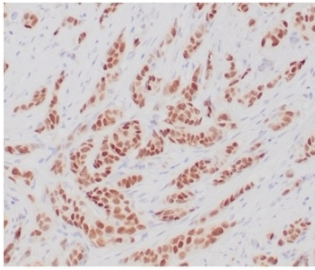
Recombinant **RABBIT MONOCLONAL**

[Bulk quote request](#)

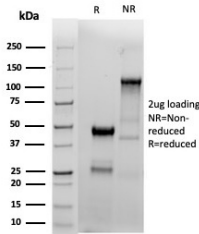
Availability	1-3 business days
Species Reactivity	Human
Format	Purified
Host	Rabbit
Clonality	Recombinant Rabbit Monoclonal
Isotype	Rabbit IgG, kappa
Clone Name	ESR1/4039R
Purity	Protein A/G affinity
UniProt	P03372
Localization	Nucleus
Applications	Immunohistochemistry (FFPE) : 1-2ug/ml
Limitations	This recombinant ERa antibody is available for research use only.



Recombinant ERa Antibody Breast Carcinoma IHC. Immunohistochemistry staining of FFPE human breast carcinoma tissue with recombinant ERa antibody (clone ESR1/4039R). HIER: boil tissue sections in pH 9 10mM Tris with 1mM EDTA for 20 min and allow to cool before testing.



IHC staining of FFPE human breast carcinoma tissue with recombinant ERα antibody (clone ESR1/4039R). HIER: boil tissue sections in pH 9 10mM Tris with 1mM EDTA for 20 min and allow to cool before testing.



SDS-PAGE analysis of purified, BSA-free recombinant ERα antibody (clone ESR1/4039R) as confirmation of integrity and purity.

Description

The ER gene consists of more than 140kb of genomic DNA divided into 8 exons, being translated into a protein with six functionally discrete domains, labeled A through F. This antibody strongly stains the nucleus of epithelial cells in breast carcinomas. The ER is an important regulator of growth and differentiation in the mammary gland. Presence of ER in breast tumors indicates an increased likelihood of response to antiestrogen (e.g. tamoxifen) therapy.

For comprehensive detection of Estrogen receptor alpha across hormone signaling and breast cancer studies, see our [Estrogen Receptor alpha antibody \(clone ESR1/3557\)](#).

Application Notes

Optimal dilution of the recombinant ERα antibody should be determined by the researcher.

Immunogen

A recombinant protein fragment from the C-terminal region was used as the immunogen for the recombinant ERα antibody.

Storage

Aliquot the recombinant ERα antibody and store frozen at -20oC or colder. Avoid repeated freeze-thaw cycles.