

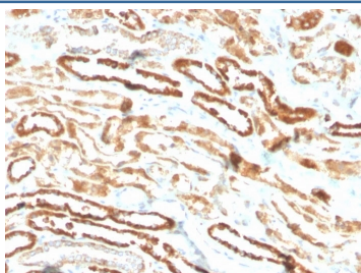
## Recombinant EPO Antibody / Erythropoietin [clone EPO/3793R] (V7678)

Catalog No.	Formulation	Size
V7678-100UG	0.2 mg/ml in 1X PBS with 0.1 mg/ml BSA (US sourced) and 0.05% sodium azide	100 ug
V7678-20UG	0.2 mg/ml in 1X PBS with 0.1 mg/ml BSA (US sourced) and 0.05% sodium azide	20 ug
V7678SAF-100UG	1 mg/ml in 1X PBS; BSA free, sodium azide free	100 ug

Recombinant **RABBIT MONOCLONAL**

[Bulk quote request](#)

Availability	1-3 business days
Species Reactivity	Human
Format	Purified
Clonality	Recombinant Rabbit Monoclonal
Isotype	Rabbit IgG
Clone Name	EPO/3793R
Purity	Protein A affinity chromatography
UniProt	P01588
Localization	Cell surface, cytoplasmic
Applications	Immunohistochemistry (FFPE) : 2-4ug/ml
Limitations	This recombinant EPO antibody is available for research use only.



IHC staining of FFPE human kidney with recombinant EPO antibody (clone EPO/3793R). HIER: boil tissue sections in pH 9 10mM Tris with 1mM EDTA for 10-20 min followed by cooling at RT for 20 min.

### Description

Recognizes a protein of about 37kDa, which is identified as Erythropoietin (EPO). Erythropoietin is a secreted, glycosylated cytokine hormone composed of four alpha helical bundles. It is the primary factor responsible for regulating

erythropoiesis during steady-state conditions and in response to blood loss and hemorrhage in the adult organism. Erythropoietin is synthesized by the kidney and stimulates the proliferation and maturation of bone marrow erythroid precursor cells. The protein is found in the plasma and regulates red cell production by promoting erythroid differentiation and initiating hemoglobin synthesis.

## **Application Notes**

Optimal dilution of the recombinant EPO antibody should be determined by the researcher.

## **Immunogen**

A recombinant human partial protein (amino acids 28-162) was used as the immunogen for the recombinant EPO antibody.

## **Storage**

Store the recombinant EPO antibody at 2-8oC (with azide) or aliquot and store at -20oC or colder (without azide).