

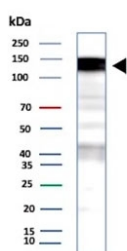
Recombinant Epidermal growth factor receptor Antibody / EGFR [clone EGFR/9166R] (V5391)

Catalog No.	Formulation	Size
V5391-100UG	0.2 mg/ml in 1X PBS with 0.1 mg/ml BSA (US sourced), 0.05% sodium azide	100 ug
V5391-20UG	0.2 mg/ml in 1X PBS with 0.1 mg/ml BSA (US sourced), 0.05% sodium azide	20 ug
V5391SAF-100UG	1 mg/ml in 1X PBS; BSA free, sodium azide free	100 ug

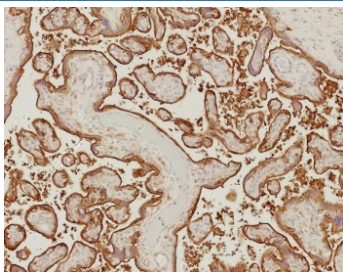
Recombinant **RABBIT MONOCLONAL**

[Bulk quote request](#)

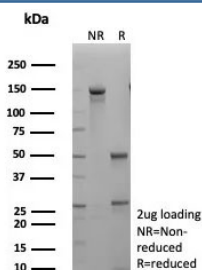
Availability	1-3 business days
Species Reactivity	Human
Format	Purified
Host	Rabbit
Clonality	Recombinant Rabbit Monoclonal
Isotype	Rabbit IgG, kappa
Clone Name	EGFR/9166R
Purity	Protein A/G affinity
UniProt	P00533
Localization	Cell Surface
Applications	Immunohistochemistry (FFPE) : 1-2ug/ml Western Blot : 2-4ug/ml
Limitations	This recombinant Epidermal growth factor receptor antibody is available for research use only.



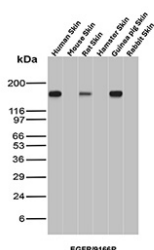
Western blot testing of human A431 cell lysate with recombinant Epidermal growth factor receptor antibody (clone EGFR/9166R). Expected molecular weight: 134-180 kDa depending on glycosylation level.



IHC staining of FFPE human placenta tissue with recombinant Epidermal growth factor receptor antibody (clone EGFR/9166R). HIER: boil tissue sections in pH 9 10mM Tris with 1mM EDTA for 20 min and allow to cool before testing.



SDS-PAGE analysis of purified, BSA-free recombinant Epidermal growth factor receptor antibody (clone EGFR/9166R) as confirmation of integrity and purity.



Western blot analysis of EGFR expression in skin tissue lysates. Human skin, mouse skin, rat skin, hamster skin, guinea pig skin, and rabbit skin tissue lysates were analyzed using recombinant EGFR/Epidermal growth factor receptor antibody (clone EGFR/9166R). A predominant band is observed at approximately the predicted molecular weight of EGFR (~170 kDa), consistent with full-length Epidermal growth factor receptor expression.

Description

This MAb recognizes a protein of 170kDa, identified as EGFR. EGFR is type I receptor tyrosine kinase with sequence homology to erbB-1, -2, -3 -4 or HER-1, -2, -3 -4. It binds to Epidermal Growth Factor (EGF), Transforming Growth Factor- α (TGF- α), Heparin-binding EGF (HB-EGF), amphiregulin, betacellulin and epiregulin. EGFR is overexpressed in tumors of breast, brain, bladder, lung, gastric, head & neck, esophagus, cervix, vulva, ovary, and endometrium. It is predominantly present in squamous cell carcinomas.

Application Notes

Optimal dilution of the recombinant Epidermal growth factor receptor antibody should be determined by the researcher.

Immunogen

A recombinant fragment (within amino acids 300-500) of human EGFR protein was used as the immunogen for the recombinant Epidermal growth factor receptor antibody.

Storage

Aliquot the recombinant Epidermal growth factor receptor antibody and store frozen at -20°C or colder. Avoid repeated freeze-thaw cycles.

