

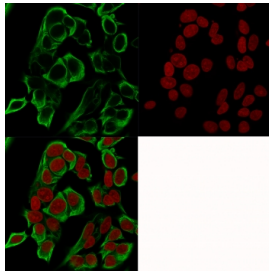
## Recombinant EpCAM Antibody [clone rMOC-31] (V3464)

Catalog No.	Formulation	Size
V3464-100UG	0.2 mg/ml in 1X PBS with 0.1 mg/ml BSA (US sourced) and 0.05% sodium azide	100 ug
V3464-20UG	0.2 mg/ml in 1X PBS with 0.1 mg/ml BSA (US sourced) and 0.05% sodium azide	20 ug
V3464SAF-100UG	1 mg/ml in 1X PBS; BSA free, sodium azide free	100 ug
V3464IHC-7ML	Prediluted in 1X PBS with 0.1 mg/ml BSA (US sourced) and 0.05% sodium azide; *For IHC use only*	7 ml

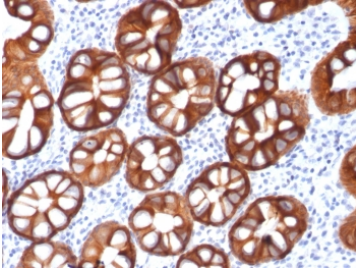
Recombinant **MOUSE MONOCLONAL**

[Bulk quote request](#)

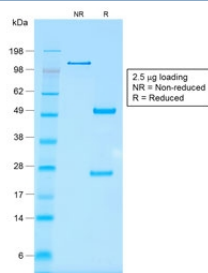
<b>Availability</b>	1-3 business days
<b>Species Reactivity</b>	Human
<b>Format</b>	Purified
<b>Host</b>	Mouse
<b>Clonality</b>	Recombinant Mouse Monoclonal
<b>Isotype</b>	Mouse IgG1, kappa
<b>Clone Name</b>	rMOC-31
<b>Purity</b>	Protein G affinity chromatography
<b>UniProt</b>	P16422
<b>Localization</b>	Cell surface, cytoplasmic
<b>Applications</b>	Immunohistochemistry (FFPE) : 0.5-1ug/ml for 30 min at RT Immunofluorescence : 1-2ug/ml Western Blot : 1-2ug/ml Flow Cytometry : 1-2ug/million cells
<b>Limitations</b>	This recombinant EpCAM antibody is available for research use only.



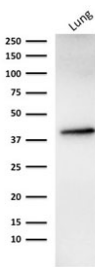
Immunofluorescence testing of human MCF7 cells with recombinant EpCAM antibody (green, clone rMOC-31) and RedDot nuclear stain (red).



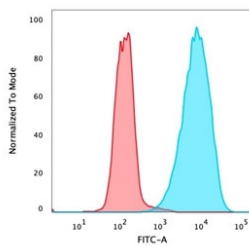
IHC testing of FFPE human colon carcinoma with recombinant EpCAM antibody (clone rMOC-31). Required HIER: boil tissue sections in 10mM citrate buffer, pH 6, for 10-20 min followed by cooling at RT for 20 min.



SDS-PAGE analysis of purified, BSA-free recombinant EpCAM antibody (clone rMOC-31) as confirmation of integrity and purity.



Western blot testing of human lung lysate with recombinant EpCAM antibody (clone rMOC-31).



Flow cytometry testing of PFA-fixed human MCF7 cells with recombinant EpCAM antibody (clone rMOC-31); Red=isotype control, Blue= recombinant EpCAM antibody.

## Description

Binding epitope of this antibody is located in the first EGF-like repeat domain (EGF1) between amino acids 27-59 of Ep-CAM. EGP40 is a 40-43kDa transmembrane epithelial glycoprotein, also identified as epithelial specific antigen (ESA), or epithelial cellular adhesion molecule (Ep-CAM). It is expressed on baso-lateral cell surface in most simple epithelia and a vast majority of carcinomas with the exception of adult squamous epithelium, hepatocytes and gastric epithelial cells. This antibody has been used to distinguish adenocarcinoma from pleural mesothelioma and hepatocellular carcinoma. This antibody is also useful in distinguishing serous carcinomas of the ovary from mesothelioma.

## Application Notes

Optimal dilution of the recombinant EpCAM antibody should be determined by the researcher.

1. The prediluted format is supplied in a dropper bottle and is optimized for use in IHC. After epitope retrieval step (if required), drip mAb solution onto the tissue section and incubate at RT for 30 min.

## **Immunogen**

Neuraminidase treated GLS-1 human small cell lung carcinoma cells were used as the immunogen for the recombinant EpCAM antibody. Binding epitope of the rMOC-31 antibody is located in the first EGF-like repeat domain (EGF1) between amino acids 27-59.

## **Storage**

Store the recombinant EpCAM antibody at 2-8oC (with azide) or aliquot and store at -20oC or colder (without azide).