

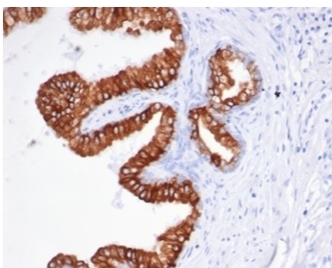
Recombinant EpCAM Antibody [clone rEGP40/826] (V8936)

Catalog No.	Formulation	Size
V8936-100UG	0.2 mg/ml in 1X PBS with 0.1 mg/ml BSA (US sourced), 0.05% sodium azide	100 ug
V8936-20UG	0.2 mg/ml in 1X PBS with 0.1 mg/ml BSA (US sourced), 0.05% sodium azide	20 ug
V8936SAF-100UG	1 mg/ml in 1X PBS; BSA free, sodium azide free	100 ug

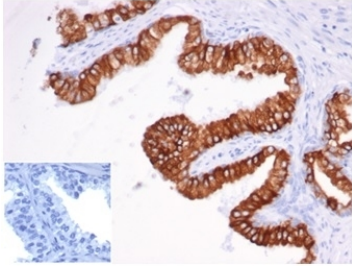
Recombinant **MOUSE MONOCLONAL**

[Bulk quote request](#)

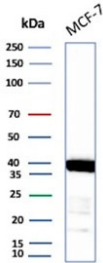
Availability	1-3 business days
Species Reactivity	Human
Format	Purified
Host	Mouse
Clonality	Recombinant Mouse Monoclonal
Isotype	Mouse IgG1, kappa
Clone Name	rEGP40/826
Purity	Protein A/G affinity
UniProt	P16422
Localization	Cell surface, cytoplasmic
Applications	Immunohistochemistry (FFPE) : 1-2ug/ml Western Blot : 2-4ug/ml
Limitations	This recombinant EpCAM antibody is available for research use only.



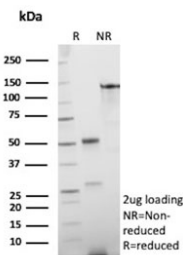
IHC staining of FFPE human prostate carcinoma tissue with recombinant EpCAM antibody (clone rEGP40/826). HIER: boil tissue sections in pH 9 10mM Tris with 1mM EDTA for 20 min and allow to cool before testing.



IHC staining of FFPE human prostate carcinoma with recombinant EpCAM antibody (clone rEGP40/826). Negative control inset: PBS instead of primary antibody to control for secondary binding. HIER: boil tissue sections in pH 9 10mM Tris with 1mM EDTA for 20 min and allow to cool before testing.



Western blot testing of human MCF7 cell lysate with recombinant EpCAM antibody. Expected molecular weight: ~35 kDa (unmodified), 40-43 kDa (glycosylated).



SDS-PAGE analysis of purified, BSA-free recombinant EpCAM antibody (clone rEGP40/826) as confirmation of integrity and purity.

Description

Binding epitope of this antibody is located in the first EGF-like repeat domain (EGF1) between amino acids 27-59 of Ep-CAM. EGP40 is a 40-43kDa transmembrane epithelial glycoprotein, also identified as epithelial specific antigen (ESA), or epithelial cellular adhesion molecule (Ep-CAM). It is expressed on baso-lateral cell surface in most simple epithelia and a vast majority of carcinomas with the exception of adult squamous epithelium, hepatocytes and gastric epithelial cells. This antibody has been used to distinguish adenocarcinoma from pleural mesothelioma and hepatocellular carcinoma. This antibody is also useful in distinguishing serous carcinomas of the ovary from mesothelioma.

Application Notes

Optimal dilution of the recombinant EpCAM antibody should be determined by the researcher.

Immunogen

Recombinant human Ep-CAM protein was used as the immunogen for the recombinant EpCAM antibody. The epitope is known to be between amino acids 27-59.

Storage

Aliquot the recombinant EpCAM antibody and store frozen at -20oC or colder. Avoid repeated freeze-thaw cycles.

