

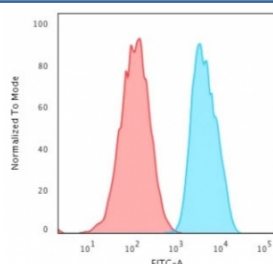
Recombinant EpCAM Antibody [clone EGP40/2571R] (V8217)

Catalog No.	Formulation	Size
V8217-100UG	0.2 mg/ml in 1X PBS with 0.1 mg/ml BSA (US sourced) and 0.05% sodium azide	100 ug
V8217-20UG	0.2 mg/ml in 1X PBS with 0.1 mg/ml BSA (US sourced) and 0.05% sodium azide	20 ug
V8217SAF-100UG	1 mg/ml in 1X PBS; BSA free, sodium azide free	100 ug

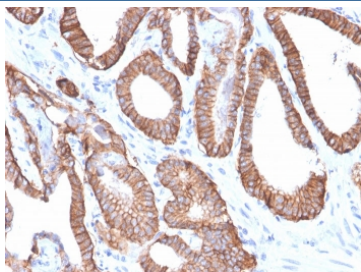
Recombinant **RABBIT MONOCLONAL**

[Bulk quote request](#)

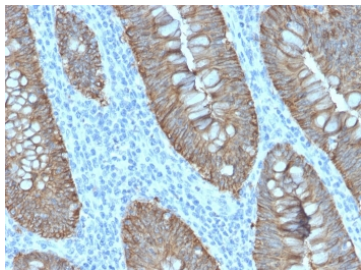
Availability	1-3 business days
Species Reactivity	Human
Format	Purified
Host	Rabbit
Clonality	Recombinant Rabbit Monoclonal
Isotype	Rabbit IgG
Clone Name	EGP40/2571R
Purity	Protein A affinity chromatography
UniProt	P16422
Localization	Cell surface, cytoplasmic
Applications	Flow Cytometry : 1-2ug/10 ⁶ cells in 0.1ml Immunohistochemistry (FFPE) : 1-2ug/ml
Limitations	This recombinant EpCAM antibody is available for research use only.



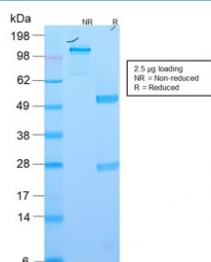
Flow cytometry testing of human MCF7 cells with recombinant EpCAM antibody (clone EGP40/2571R); Red=isotype control, Blue= recombinant EpCAM antibody.



IHC staining of FFPE human prostate carcinoma with recombinant EpCAM antibody (clone EGP40/2571R). HIER: boil tissue sections in pH 9 10mM Tris with 1mM EDTA for 10-20 min and allow to cool before testing.



IHC staining of FFPE human colon carcinoma with recombinant EpCAM antibody (clone EGP40/2571R). HIER: boil tissue sections in pH 9 10mM Tris with 1mM EDTA for 10-20 min and allow to cool before testing.



SDS-PAGE analysis of purified, BSA-free recombinant EpCAM antibody (clone EGP40/2571R) as confirmation of integrity and purity.

Description

EGP40 is a 40-43kDa transmembrane epithelial glycoprotein, also identified as epithelial specific antigen (ESA), or epithelial cellular adhesion molecule (Ep-CAM). It is expressed on baso-lateral cell surface in most simple epithelia and a vast majority of carcinomas. Antibody to Ep-CAM has been used to distinguish adenocarcinoma from pleural mesothelioma and hepatocellular carcinoma. This antibody is also useful in distinguishing serous carcinomas of the ovary from mesothelioma.

Application Notes

Optimal dilution of the recombinant EpCAM antibody should be determined by the researcher.

Immunogen

A recombinant human partial protein (amino acids 100-224) was used as the immunogen for the EpCAM antibody. The epitope of this mAb has been mapped to between amino acids 202-212.

Storage

Store the recombinant EpCAM antibody at 2-8°C (with azide) or aliquot and store at -20°C or colder (without azide).

