

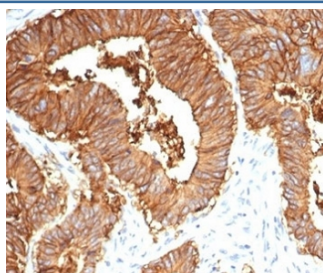
Recombinant EpCAM Antibody / Cytoplasmic domain [clone EGP40/7035R] (V8850)

Catalog No.	Formulation	Size
V8850-100UG	0.2 mg/ml in 1X PBS with 0.1 mg/ml BSA (US sourced), 0.05% sodium azide	100 ug
V8850-20UG	0.2 mg/ml in 1X PBS with 0.1 mg/ml BSA (US sourced), 0.05% sodium azide	20 ug
V8850SAF-100UG	1 mg/ml in 1X PBS; BSA free, sodium azide free	100 ug

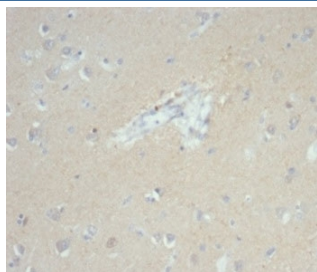
Recombinant **RABBIT MONOCLONAL**

[Bulk quote request](#)

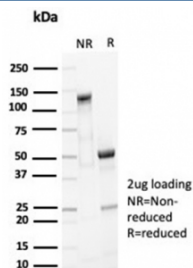
Availability	1-3 business days
Species Reactivity	Human
Format	Purified
Clonality	Recombinant Rabbit Monoclonal
Isotype	Rabbit IgG, kappa
Clone Name	EGP40/7035R
Purity	Protein A affinity
UniProt	P16422
Localization	Cell surface, cytoplasmic
Applications	Immunohistochemistry (FFPE) : 1-2ug/ml
Limitations	This recombinant EpCAM antibody is available for research use only.



IHC staining of FFPE human colon tissue with recombinant EpCAM antibody (clone EGP40/7035R). HIER: boil tissue sections in pH 9 10mM Tris with 1mM EDTA for 20 min and allow to cool before testing.



IHC staining of FFPE human brain tissue with recombinant EpCAM antibody (clone EGP40/7035R). HIER: boil tissue sections in pH 9 10mM Tris with 1mM EDTA for 20 min and allow to cool before testing.



SDS-PAGE analysis of purified, BSA-free recombinant EpCAM antibody (EGP40/7035R) as confirmation of integrity and purity.

Description

Epithelial cellular adhesion molecule (Ep-CAM), also called epithelial specific antigen (ESA), is a 40-43kDa transmembrane epithelial glycoprotein. It is expressed on baso-lateral cell surface in most simple epithelia and a vast majority of carcinomas. Antibody to Ep-CAM has been used to distinguish adenocarcinoma from pleural mesothelioma and hepatocellular carcinoma. This antibody is also useful in distinguishing serous carcinomas of the ovary from mesothelioma.

Application Notes

Optimal dilution of the recombinant EpCAM antibody should be determined by the researcher.

Immunogen

A portion of amino acids 289-314 of human EpCAM was used as the immunogen for the recombinant EpCAM antibody.

Storage

Aliquot the recombinant EpCAM antibody and store frozen at -20oC or colder. Avoid repeated freeze-thaw cycles.