

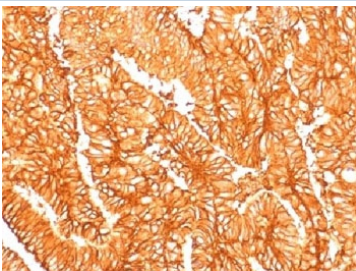
Recombinant Ep-CAM Antibody / Rabbit Monoclonal [clone EGP40/1556R] (V7265)

Catalog No.	Formulation	Size
V7265-100UG	0.2 mg/ml in 1X PBS with 0.1 mg/ml BSA (US sourced) and 0.05% sodium azide	100 ug
V7265-20UG	0.2 mg/ml in 1X PBS with 0.1 mg/ml BSA (US sourced) and 0.05% sodium azide	20 ug
V7265SAF-100UG	1 mg/ml in 1X PBS; BSA free, sodium azide free	100 ug
V7265IHC-7ML	Prediluted in 1X PBS with 0.1 mg/ml BSA (US sourced) and 0.05% sodium azide; *For IHC use only*	7 ml

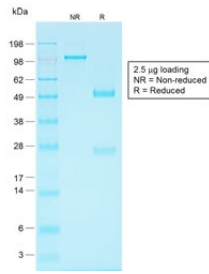
Recombinant **RABBIT MONOCLONAL**

[Bulk quote request](#)

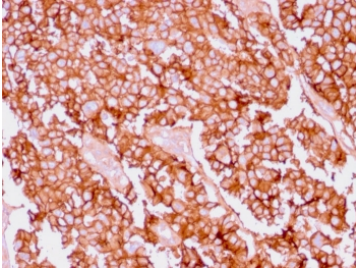
Availability	1-3 business days
Species Reactivity	Human
Format	Purified
Clonality	Recombinant Rabbit Monoclonal
Isotype	Rabbit IgG, kappa
Clone Name	EGP40/1556R
Purity	Protein A affinity chromatography
UniProt	P16422
Localization	Cell surface, cytoplasmic
Applications	Flow Cytometry : 1-2ug/10 ⁶ cells Immunofluorescence : 1-2ug/ml Immunohistochemistry (FFPE) : 0.5-1ug/ml for 30 min at RT
Limitations	This recombinant Ep-CAM antibody is available for research use only.



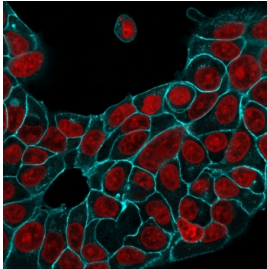
IHC testing of FFPE human colon carcinoma and recombinant Ep-CAM antibody (clone EGP40/1556R). Required HIER: steam sections in pH6 citrate buffer for 10-20 min.



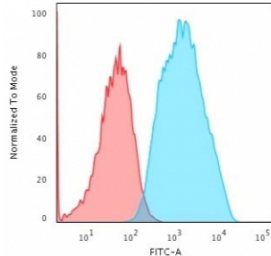
SDS-PAGE analysis of purified, BSA-free recombinant Ep-CAM antibody (clone EGP40/1556R) as confirmation of integrity and purity.



IHC testing of FFPE human ovary tissue and recombinant Ep-CAM antibody (clone EGP40/1556R). Required HIER: steam sections in pH9 EDTA for 10-20 min.



Immunofluorescent staining of human MCF7 cells with recombinant Ep-CAM antibody (clone EGP40/1556R, cyan) and Reddot nuclear stain (red).



Flow cytometry testing of human MCF7 cells with recombinant Ep-CAM antibody (clone EGP40/1556R); Red=isotype control, Blue= recombinant Ep-CAM antibody.

Description

Ep-CAM may act as a physical homophilic interaction molecule between intestinal epithelial cells (IECs) and intraepithelial lymphocytes (IELs) at the mucosal epithelium for providing immunological barrier as a first line of defense against mucosal infection. [UniProt]

Application Notes

Titering of the recombinant Ep-CAM antibody may be required for optimal performance.

1. The prediluted format is supplied in a dropper bottle and is optimized for use in IHC. After epitope retrieval step (if required), drip mAb solution onto the tissue section and incubate at RT for 30 min.

Immunogen

Human protein was used as the immunogen for the recombinant Ep-CAM antibody.

Storage

Store the recombinant Ep-CAM antibody at 2-8°C (with azide) or aliquot and store at -20°C or colder (without azide).