

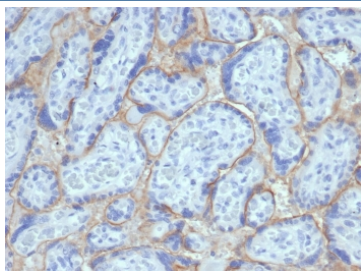
EGFR / EGF Receptor Antibody (Extracellular domain) [clone EGFR/6390R] (V9274)

Catalog No.	Formulation	Size
V9274-100UG	0.2 mg/ml in 1X PBS with 0.1 mg/ml BSA (US sourced), 0.05% sodium azide	100 ug
V9274-20UG	0.2 mg/ml in 1X PBS with 0.1 mg/ml BSA (US sourced), 0.05% sodium azide	20 ug
V9274SAF-100UG	1 mg/ml in 1X PBS; BSA free, sodium azide free	100 ug

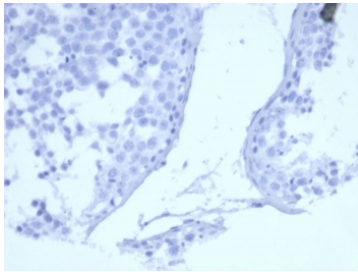
Recombinant **RABBIT MONOCLONAL**

[Bulk quote request](#)

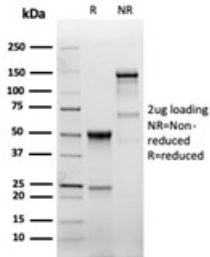
Availability	1-3 business days
Species Reactivity	Human
Format	Purified
Host	Rabbit
Clonality	Recombinant Rabbit Monoclonal
Isotype	Rabbit IgG
Clone Name	EGFR/6390R
Purity	Protein A/G affinity
UniProt	P00533
Localization	Cell Surface
Applications	Immunohistochemistry (FFPE) : 1-2ug/ml
Limitations	This recombinant EGFR antibody is available for research use only.



IHC staining of FFPE human placental tissue with recombinant EGFR antibody (clone EGFR/6390R). HIER: boil tissue sections in pH 9 10mM Tris with 1mM EDTA for 20 min and allow to cool before testing.



Negative control: IHC staining of FFPE human testis tissue with recombinant EGFR antibody (EGFR/6390R) at 2ug/ml in PBS for 30min RT. HIER: boil tissue sections in pH 9 10mM Tris with 1mM EDTA for 20 min and allow to cool before testing.



SDS-PAGE analysis of purified, BSA-free recombinant EGFR antibody (clone EGFR/6390R) as confirmation of integrity and purity.

Description

This MAb recognizes a protein of 170kDa, identified as EGFR. EGFR is type I receptor tyrosine kinase with sequence homology to erbB-1, -2, -3 -4 or HER-1, -2, -3 -4. It binds to Epidermal Growth Factor (EGF), Transforming Growth Factor- α (TGF- α), Heparin-binding EGF (HB-EGF), amphiregulin, betacellulin and epiregulin. EGFR is overexpressed in tumors of breast, brain, bladder, lung, gastric, head neck, esophagus, cervix, vulva, ovary, and endometrium. It is predominantly present in squamous cell carcinomas.

Application Notes

Optimal dilution of the recombinant EGFR antibody should be determined by the researcher.

Immunogen

Amino acids 25-645 from the extracellular domain of the human protein were used as the immunogen for the recombinant EGF Receptor antibody.

Storage

Aliquot the recombinant EGFR antibody and store frozen at -20oC or colder. Avoid repeated freeze-thaw cycles.