

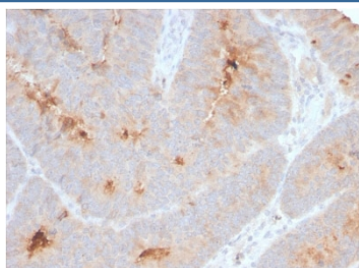
Recombinant ECM1 Antibody / Secretory Component Glycoprotein [clone ECM1/2889R] (V3979)

Catalog No.	Formulation	Size
V3979-100UG	0.2 mg/ml in 1X PBS with 0.1 mg/ml BSA (US sourced) and 0.05% sodium azide	100 ug
V3979-20UG	0.2 mg/ml in 1X PBS with 0.1 mg/ml BSA (US sourced) and 0.05% sodium azide	20 ug
V3979SAF-100UG	1 mg/ml in 1X PBS; BSA free, sodium azide free	100 ug
V3979IHC-7ML	Prediluted in 1X PBS with 0.1 mg/ml BSA (US sourced) and 0.05% sodium azide; *For IHC use only*	7 ml

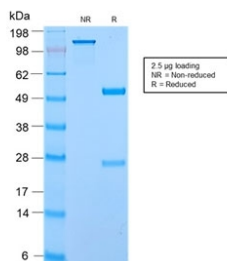
Recombinant **RABBIT MONOCLONAL**

[Bulk quote request](#)

Availability	1-3 business days
Species Reactivity	Human
Format	Purified
Clonality	Recombinant Rabbit Monoclonal
Isotype	Rabbit IgG, kappa
Clone Name	ECM1/2889R
Purity	Protein A affinity chromatography
UniProt	Q16610
Localization	Cell surface and cytoplasmic
Applications	Immunohistochemistry (FFPE) : 1-2ug/ml for 30 min at RT
Limitations	This recombinant ECM1 antibody is available for research use only.



IHC staining of FFPE human colon carcinoma with recombinant ECM1 antibody. HIER: boil tissue sections in pH 9 10mM Tris with 1mM EDTA for 10-20 min and allow to cool before testing.



SDS-PAGE analysis of purified, BSA-free recombinant ECM1 antibody (clone ECM1/2889R) as confirmation of integrity and purity.

Description

This mAb reacts with a reduction-resistant epitope present in both free and SIgA bound Secretory Component. It does not react with the cell lines lacking secretory component. The antibody is useful for studying the distribution and level of both free and bound secretory component. Secretory component is differentially expressed in epithelium, and the antibody is a popular marker for identifying subpopulations of epithelial cells and epithelial differentiation. The Secretory component antibody is a useful research tool for studying mucosal immunity, inflammation, remodeling, differentiation and tumorigenesis, all processes associated with differential secretory component expression.

Application Notes

Optimal dilution of the recombinant ECM1 antibody should be determined by the researcher.

1. The prediluted format is supplied in a dropper bottle and is optimized for use in IHC. After epitope retrieval step (if required), drip mAb solution onto the tissue section and incubate at RT for 30 min.

Immunogen

Recombinant human protein was used as the immunogen for the recombinant ECM1 antibody.

Storage

Store the recombinant ECM1 antibody at 2-8°C (with azide) or aliquot and store at -20°C or colder (without azide).