

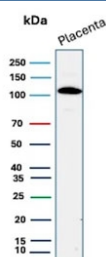
E-cadherin Antibody / Epithelial Polarity Maintenance Antibody [clone CDH1/9226R] (V5470)

Catalog No.	Formulation	Size
V5470-100UG	0.2 mg/ml in 1X PBS with 0.1 mg/ml BSA (US sourced), 0.05% sodium azide	100 ug
V5470-20UG	0.2 mg/ml in 1X PBS with 0.1 mg/ml BSA (US sourced), 0.05% sodium azide	20 ug
V5470SAF-100UG	1 mg/ml in 1X PBS; BSA free, sodium azide free	100 ug

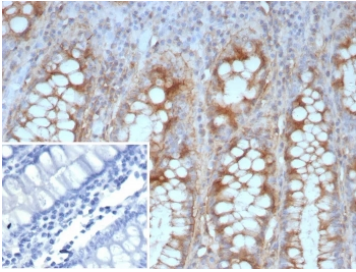
Recombinant **RABBIT MONOCLONAL**

[Bulk quote request](#)

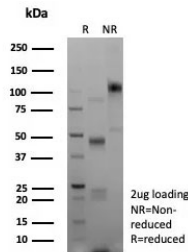
Availability	1-3 business days
Species Reactivity	Human
Format	Purified
Host	Rabbit
Clonality	Recombinant Rabbit Monoclonal
Isotype	Rabbit IgG, kappa
Clone Name	CDH1/9226R
Purity	Protein A/G affinity
UniProt	P12830
Localization	Cell membrane
Applications	Immunohistochemistry (FFPE) : 1-2ug/ml Western Blot : 2-4ug/ml
Limitations	This E-cadherin Antibody / Epithelial Polarity Maintenance Antibody is available for research use only.



E-cadherin Antibody for WB in human placental tissue. Western blot analysis of Cadherin 1 / CDH1 expression using clone CDH1/9226R antibody, showing a band near the predicted molecular weight of E-cadherin. E-cadherin is synthesized as a precursor and undergoes glycosylation, resulting in an apparent molecular weight typically observed between approximately 80-120 kDa, with the precursor form near 135 kDa. The detected band is consistent with mature glycosylated E-cadherin associated with polarized epithelial tissue structure.



E-cadherin Antibody Colon IHC. Immunohistochemistry analysis of Cadherin 1 / CDH1 expression in FFPE human colon tissue using clone CDH1/9226R antibody, showing strong membranous HRP-DAB brown staining in epithelial cells lining glandular structures with clear lateral membrane localization consistent with epithelial polarity, while surrounding stromal tissue remains largely negative. Inset: PBS used in place of primary Ab (secondary Ab negative control). HIER: boil tissue sections in pH 9 10mM Tris with 1mM EDTA for 20 min and allow to cool before testing. Signal highlights organized epithelial architecture and polarity maintenance within colon mucosa.



SDS-PAGE analysis of purified, BSA-free recombinant E-Cadherin antibody (clone CDH1/9226R) as confirmation of integrity and purity.

Description

E-cadherin (CDH1) is a transmembrane adhesion protein that plays a critical role in establishing and maintaining epithelial cell polarity and tissue organization. E-cadherin (CDH1) antibody, also known as Cadherin 1 antibody, detects a protein that localizes to lateral cell membranes where it defines boundaries between adjacent epithelial cells and supports polarized cell architecture. E-cadherin Antibody / Epithelial Polarity Maintenance Antibody (clone CDH1/9226R) enables detection of this protein in studies focused on spatial organization and coordinated structure of epithelial tissues.

CDH1 is essential for the establishment of apical-basal polarity, a defining feature of epithelial cells that allows for directional transport, barrier formation, and coordinated cellular function. By maintaining stable lateral adhesion, E-cadherin helps organize cells into structured layers with distinct apical and basal domains. E-cadherin antibody is therefore widely used to study how epithelial cells achieve and maintain polarity in both normal and experimental systems.

Disruption of CDH1 expression or localization leads to loss of polarity and disorganization of epithelial structure. These changes are frequently observed in pathological conditions, including cancer, where loss of polarity contributes to abnormal tissue architecture and uncontrolled growth. Detection of E-cadherin using CDH1 antibody provides a direct readout of polarity status and supports investigation of structural changes associated with disease progression.

At the molecular level, CDH1 interacts with cytoskeletal and signaling components that coordinate cell orientation and structural organization. Through these interactions, E-cadherin integrates adhesion with intracellular pathways that regulate cell positioning, differentiation, and tissue patterning. This coordination is essential for maintaining functional epithelial architecture.

The recombinant rabbit monoclonal clone CDH1/9226R antibody supports reliable detection of E-cadherin and is particularly well suited for studies focused on epithelial polarity, tissue organization, and structural coordination. This E-cadherin antibody provides a valuable tool for investigating how epithelial cells maintain spatial organization and respond to changes in polarity-related signaling pathways.

This antibody is part of the [CDH1 antibody collection](#), where multiple E-cadherin antibody formats and applications are available for studying epithelial adhesion and cancer progression.

Application Notes

Optimal dilution of the E-cadherin Antibody / Epithelial Polarity Maintenance Antibody should be determined by the

researcher.

Immunogen

A recombinant fragment (within amino acids 600-700) of human Cadherin 1 protein was used as the immunogen for the recombinant E-Cadherin antibody.

Storage

Aliquot the recombinant E-Cadherin antibody and store frozen at -20oC or colder. Avoid repeated freeze-thaw cycles.

Alternate Names

CDH1 antibody, E-cadherin antibody, Cadherin 1 antibody, epithelial polarity protein antibody, cell organization marker antibody