

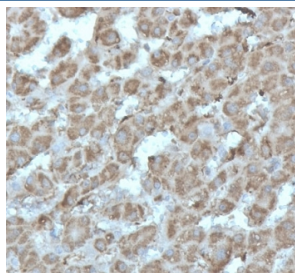
Recombinant DNA topoisomerase I Antibody / TOP1MT [clone rTOP1MT/488] (V9451)

Catalog No.	Formulation	Size
V9451-100UG	0.2 mg/ml in 1X PBS with 0.1 mg/ml BSA (US sourced), 0.05% sodium azide	100 ug
V9451-20UG	0.2 mg/ml in 1X PBS with 0.1 mg/ml BSA (US sourced), 0.05% sodium azide	20 ug
V9451SAF-100UG	1 mg/ml in 1X PBS; BSA free, sodium azide free	100 ug

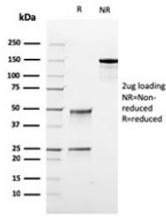
Recombinant **MOUSE MONOCLONAL**

[Bulk quote request](#)

Availability	1-3 business days
Species Reactivity	Human
Format	Purified
Host	Mouse
Clonality	Recombinant Mouse Monoclonal
Isotype	Mouse IgG1, kappa
Clone Name	rTOP1MT/488
Purity	Protein A/G affinity
UniProt	Q969P6
Localization	Cytoplasm
Applications	Immunohistochemistry (FFPE) : 1-2ug/ml
Limitations	This recombinant DNA topoisomerase I antibody is available for research use only.



IHC staining of FFPE human liver tissue with recombinant DNA topoisomerase I antibody (clone rTOP1MT/488). HIER: boil tissue sections in pH 9 10mM Tris with 1mM EDTA for 20 min and allow to cool before testing.



SDS-PAGE analysis of purified, BSA-free recombinant DNA topoisomerase I antibody (clone rTOP1MT/488) as confirmation of integrity and purity.

Description

DNA topoisomerases are nuclear enzymes that regulate the topological structure of DNA in eukaryotic cells by transiently breaking and rejoining DNA strands. Due to their roles in DNA replication, recombination, and transcription, DNA topoisomerases have been identified as targets of numerous anticancer drugs. Mitochondrial Topo I (DNA topoisomerase I, mitochondrial) is a 601 amino acid protein that primarily acts to relieve DNA strain that may occur during duplication of mitochondrial DNA. As a type IB topoisomerase, mitochondrial Topo I requires a divalent metal, either, calcium or magnesium, as well as an alkaline pH for optimal activity.

Application Notes

Optimal dilution of the recombinant DNA topoisomerase I antibody should be determined by the researcher.

Immunogen

Recombinant full-length human TOP1MT protein was used as the immunogen for the recombinant DNA topoisomerase I antibody.

Storage

Aliquot the recombinant DNA topoisomerase I antibody and store frozen at -20°C or colder. Avoid repeated freeze-thaw cycles.