

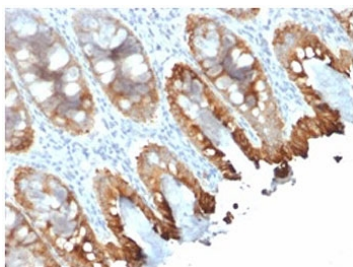
Recombinant Cytokeratin 8/18 Antibody [clone rKRT8.18/1346] (V3746)

Catalog No.	Formulation	Size
V3746-100UG	0.2 mg/ml in 1X PBS with 0.1 mg/ml BSA (US sourced) and 0.05% sodium azide	100 ug
V3746-20UG	0.2 mg/ml in 1X PBS with 0.1 mg/ml BSA (US sourced) and 0.05% sodium azide	20 ug
V3746SAF-100UG	1 mg/ml in 1X PBS; BSA free, sodium azide free	100 ug

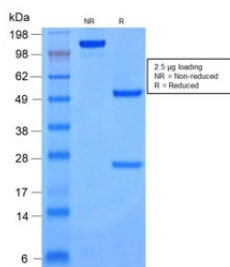
Recombinant MOUSE MONOCLONAL

[Bulk quote request](#)

Availability	1-3 business days
Species Reactivity	Human
Format	Purified
Host	Mouse
Clonality	Recombinant Mouse Monoclonal
Isotype	Mouse IgG1, kappa
Clone Name	rKRT8.18/1346
Purity	Protein G affinity chromatography
UniProt	P05787, P05783
Localization	Cytoplasmic
Applications	Immunohistochemistry (FFPE) : 1-2ug/ml for 30 min at RT
Limitations	This Cytokeratin 8/18 antibody is available for research use only.



IHC staining of FFPE human colon tissue with recombinant Cytokeratin 8/18 antibody (clone rKRT8.18/1346). Required HIER: boil tissue sections in pH 9 10mM Tris with 1mM EDTA for 10-20 min and allow to cool before testing.



SDS-PAGE analysis of purified, BSA-free recombinant Cytokeratin 8/18 antibody (clone rKRT8.18/1346) as confirmation of integrity and purity.

Description

Cytokeratin 8 (CK8) belongs to the type II (or B or basic) subfamily of high molecular weight cytokeratins and exists in combination with cytokeratin 18 (CK18). This mAb recognizes all simple epithelia including glandular epithelium, for example thyroid, female breast, gastrointestinal tract, respiratory tract, and urogenital tract including transitional epithelium. All adenocarcinomas and most squamous carcinomas are positive but keratinizing squamous carcinomas are usually negative. This antibody is useful in demonstrating the presence of Paget cells; there is very little keratin 18 in the normal epidermis so only Paget cells are stained.

Application Notes

Optimal dilution of the Cytokeratin 8/18 antibody should be determined by the researcher.

Immunogen

A cytoskeleton preparation from HeLa cells was used as the immunogen for the Cytokeratin 8/18 antibody.

Storage

Store the Cytokeratin 8/18 antibody at 2-8°C (with azide) or aliquot and store at -20°C or colder (without azide).