

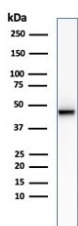
Recombinant Cytokeratin 8 Antibody / Rabbit Monoclonal [clone KRT8/2174R] (V3562)

Catalog No.	Formulation	Size
V3562-100UG	0.2 mg/ml in 1X PBS with 0.1 mg/ml BSA (US sourced) and 0.05% sodium azide	100 ug
V3562-20UG	0.2 mg/ml in 1X PBS with 0.1 mg/ml BSA (US sourced) and 0.05% sodium azide	20 ug
V3562SAF-100UG	1 mg/ml in 1X PBS; BSA free, sodium azide free	100 ug
V3562IHC-7ML	Prediluted in 1X PBS with 0.1 mg/ml BSA (US sourced) and 0.05% sodium azide; *For IHC use only*	7 ml

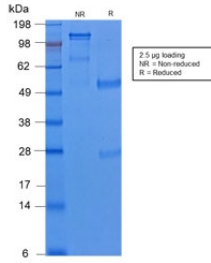
Recombinant **RABBIT MONOCLONAL**

[Bulk quote request](#)

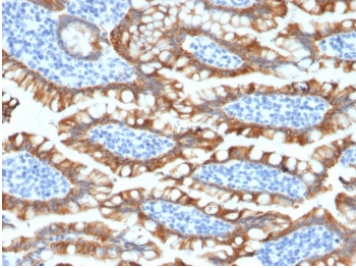
Species Reactivity	Human
Format	Purified
Host	Rabbit
Clonality	Recombinant Rabbit Monoclonal
Isotype	Rabbit IgG, kappa
Clone Name	KRT8/2174R
Purity	Protein A affinity chromatography
UniProt	P05787
Localization	Cytoplasmic
Applications	Immunohistochemistry (FFPE) : 0.5-1ug/ml for 30 min at RT Western Blot : 1-2ug/ml
Limitations	This recombinant Cytokeratin 8 antibody is available for research use only.



Western blot testing of human HCT-116 cell lysate with recombinant Cytokeratin 8 antibody (clone KRT8/2174R).



SDS-PAGE analysis of purified, BSA-free recombinant Cytokeratin 8 antibody (clone KRT8/2174R) as confirmation of integrity and purity.



IHC testing of FFPE human small intestine tissue with recombinant Cytokeratin 8 antibody (clone KRT8/2174R). Required HIER: boil tissue sections in 10mM citrate buffer, pH 6, for 10-20 min followed by cooling at RT for 20 min.

Description

Cytokeratin 8 (CK8) belongs to the type II (or B or basic) subfamily of high molecular weight cytokeratins and exists in combination with cytokeratin 18 (CK18). Cytokeratin 8 is primarily found in the non-squamous epithelia and is present in majority of adenocarcinomas and ductal carcinomas. It is absent in squamous cell carcinomas. Hepatocellular carcinomas are defined by the use of antibody that recognizes only cytokeratin 8 and 18. Cytokeratin 8 exists on several types of normal and neoplastic epithelia, including many ductal and glandular epithelia such as colon, stomach, small intestine, trachea, and esophagus as well as in transitional epithelium.

Researchers seeking protein microarray validated detection of Keratin 8 for epithelial differentiation, cytoskeletal biology, and cancer research applications may also be interested in our [Cytokeratin 8 Antibody](#) page.

Application Notes

The concentration stated for each application is a general starting point. Variations in protocols, secondaries and substrates may require the recombinant Cytokeratin 8 antibody to be titered up or down for optimal performance.

1. The prediluted format is supplied in a dropper bottle and is optimized for use in IHC. After epitope retrieval step (if required), drip mAb solution onto the tissue section and incubate at RT for 30 min.

Immunogen

A cytoskeletal preparation from human HeLa cells was used as the immunogen for this recombinant Cytokeratin 8 antibody.

Storage

Store the recombinant Cytokeratin 8 antibody at 2-8oC (with azide) or aliquot and store at -20oC or colder (without azide).

