

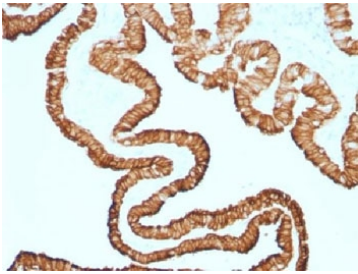
Recombinant Cytokeratin 7 Antibody / Rabbit Monoclonal [clone KRT7/1499R] (V7258)

Catalog No.	Formulation	Size
V7258-100UG	0.2 mg/ml in 1X PBS with 0.1 mg/ml BSA (US sourced) and 0.05% sodium azide	100 ug
V7258-20UG	0.2 mg/ml in 1X PBS with 0.1 mg/ml BSA (US sourced) and 0.05% sodium azide	20 ug
V7258SAF-100UG	1 mg/ml in 1X PBS; BSA free, sodium azide free	100 ug
V7258IHC-7ML	Prediluted in 1X PBS with 0.1 mg/ml BSA (US sourced) and 0.05% sodium azide; *For IHC use only*	7 ml

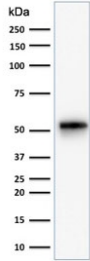
Recombinant **RABBIT MONOCLONAL**

[Bulk quote request](#)

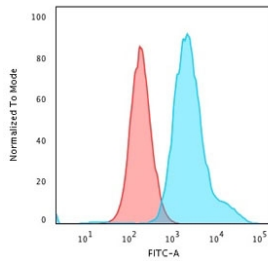
Availability	1-3 business days
Species Reactivity	Human
Format	Purified
Host	Rabbit
Clonality	Recombinant Rabbit Monoclonal
Isotype	Rabbit IgG, kappa
Clone Name	KRT7/1499R
Purity	Protein A affinity chromatography
UniProt	P08729
Localization	Cytoplasmic
Applications	Flow Cytometry : 0.5-1ug/10 ⁶ cells Western Blot : 0.5-2ug/ml Immunohistochemistry (FFPE) : 0.5-1ug/ml for 30 min at RT
Limitations	This recombinant Cytokeratin 7 antibody is available for research use only.



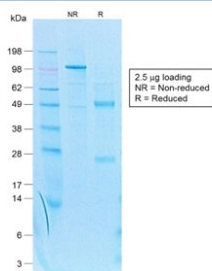
IHC testing of FFPE human oviduct with recombinant Cytokeratin 7 antibody (clone KRT7/1499R). Required HIER: steam sections in pH 9 10mM Tris with 1mM EDTA for 10-20 min.



Western blot testing of human HeLa cell lysate with recombinant Cytokeratin 7 antibody (clone KRT7/1499R). Predicted molecular weight ~51 kDa.



Flow cytometry testing of PFA-fixed human HeLa cells with recombinant Cytokeratin 7 antibody (clone KRT7/1499R); Red=isotype control, Blue= recombinant Cytokeratin 7 antibody.



SDS-PAGE analysis of purified, BSA-free recombinant Cytokeratin 7 antibody (clone KRT7/1499R) as confirmation of integrity and purity.

Description

Cytokeratin-7 (CK7) is a member of the keratin gene family. The type II cytokeratins consist of basic or neutral proteins which are arranged in pairs of heterotypic keratin chains coexpressed during differentiation of simple and stratified epithelial tissues. CK7 is specifically expressed in the simple epithelia lining the cavities of the internal organs and in the gland ducts and blood vessels. It is found in simple glandular epithelia, and in transitional epithelium. Epithelial cells of the lung and breast both contain CK7, but some other glandular epithelia, such as those of the colon and prostate, do not. Because the protein is found in both healthy and neoplastic cells, antibodies to CK7 can be used in immunohistochemistry to distinguish ovarian and transitional cell carcinomas from colonic and prostate cancers, respectively. It is commonly used together with CK20 when making such diagnoses. [Wiki]

Application Notes

Optimal dilution of the recombinant Cytokeratin 7 antibody should be determined by the researcher.

1. The prediluted format is supplied in a dropper bottle and is optimized for use in IHC. After epitope retrieval step (if required), drip mAb solution onto the tissue section and incubate at RT for 30 min.

Immunogen

Full-length human CK7 protein was used as the immunogen for the recombinant Cytokeratin 7 antibody.

Storage

Store the recombinant Cytokeratin 7 antibody at 2-8oC (with azide) or aliquot and store at -20oC or colder (without azide).