

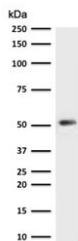
Recombinant Cytokeratin 7 Antibody / Rabbit Monoclonal [clone CTKN7-2R] (V3729)

| Catalog No. | Formulation | Size |
|----------------|---|--------|
| V3729-100UG | 0.2 mg/ml in 1X PBS with 0.1 mg/ml BSA (US sourced) and 0.05% sodium azide | 100 ug |
| V3729-20UG | 0.2 mg/ml in 1X PBS with 0.1 mg/ml BSA (US sourced) and 0.05% sodium azide | 20 ug |
| V3729SAF-100UG | 1 mg/ml in 1X PBS; BSA free, sodium azide free | 100 ug |
| V3729IHC-7ML | Prediluted in 1X PBS with 0.1 mg/ml BSA (US sourced) and 0.05% sodium azide; *For IHC use only* | 7 ml |

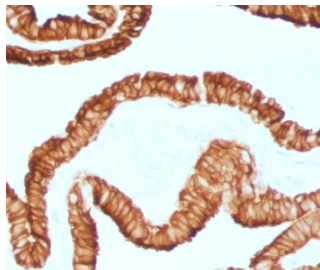
Recombinant **RABBIT MONOCLONAL**

[Bulk quote request](#)

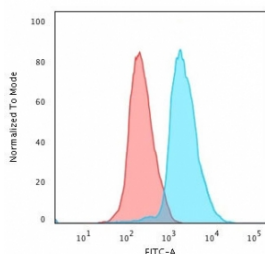
| | |
|--------------------|--|
| Availability | 1-3 business days |
| Species Reactivity | Human |
| Format | Purified |
| Host | Rabbit |
| Clonality | Recombinant Rabbit Monoclonal |
| Isotype | Rabbit IgG, kappa |
| Clone Name | CTKN7-2R |
| Purity | Protein A affinity chromatography |
| UniProt | P08729 |
| Localization | Cytoplasmic |
| Applications | Western Blot : 1-2ug/ml Immunohistochemistry (FFPE) : 1-2ug/ml for 30 min at RT Prediluted IHC Only Format : incubate for 30 min at RT (1) |
| Limitations | This recombinant Cytokeratin 7 antibody is available for research use only. |



Western blot testing of human HeLa cell lysate with recombinant Cytokeratin 7 antibody (clone CTKN7-2R). Predicted molecular weight ~51 kDa.



IHC staining of FFPE human oviduct with recombinant Cytokeratin 7 antibody (clone CTKN7-2R). Required HIER: boil tissue sections in pH6, 10mM citrate buffer, for 10-20 min followed by cooling at RT for 20 min.



Flow cytometry testing of PFA-fixed human HeLa cells with recombinant Cytokeratin 7 antibody (clone CTKN7-2R); Red=isotype control, Blue= recombinant Cytokeratin 7 antibody.

Description

Cytokeratin-7 (CK7) is a member of the keratin gene family. CK7 is specifically expressed in the simple epithelia lining the cavities of the internal organs and in the gland ducts and blood vessels. It is found in simple glandular epithelia, and in transitional epithelium. [Wiki]

Application Notes

The stated application concentrations are suggested starting points. Titration of the recombinant Cytokeratin 7 antibody may be required due to differences in protocols and secondary/substrate sensitivity.

1. The prediluted format is supplied in a dropper bottle and is optimized for use in IHC. After epitope retrieval step (if required), drip mAb solution onto the tissue section and incubate at RT for 30 min.

Immunogen

Full-length human CK7 protein was used as the immunogen for the recombinant Cytokeratin 7 antibody.

Storage

Store the recombinant Cytokeratin 7 antibody at 2-8°C (with azide) or aliquot and store at -20°C or colder (without azide).

