

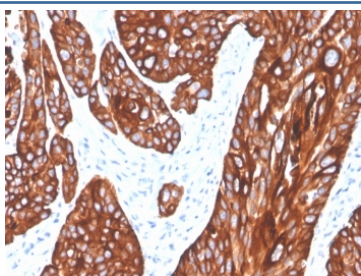
## Cytokeratin 5 Antibody / KRT5 / Keratin 5 [clone rKRT5/6398] (V8912)

Catalog No.	Formulation	Size
V8912-100UG	0.2 mg/ml in 1X PBS with 0.1 mg/ml BSA (US sourced), 0.05% sodium azide	100 ug
V8912-20UG	0.2 mg/ml in 1X PBS with 0.1 mg/ml BSA (US sourced), 0.05% sodium azide	20 ug
V8912SAF-100UG	1 mg/ml in 1X PBS; BSA free, sodium azide free	100 ug

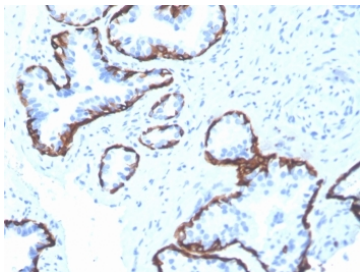
Recombinant **MOUSE MONOCLONAL**

[Bulk quote request](#)

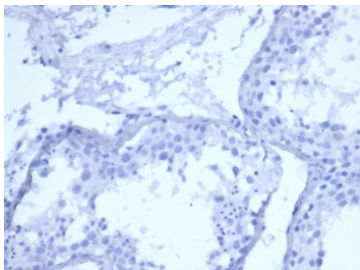
<b>Availability</b>	1-3 business days
<b>Species Reactivity</b>	Human
<b>Format</b>	Purified
<b>Host</b>	Mouse
<b>Clonality</b>	Recombinant Mouse Monoclonal
<b>Isotype</b>	Mouse IgG2a, kappa
<b>Clone Name</b>	rKRT5/6398
<b>Purity</b>	Protein A/G affinity
<b>UniProt</b>	P13647
<b>Localization</b>	Cytoplasmic
<b>Applications</b>	Immunohistochemistry (FFPE) : 1-2ug/ml
<b>Limitations</b>	This recombinant Cytokeratin 5 antibody is available for research use only.



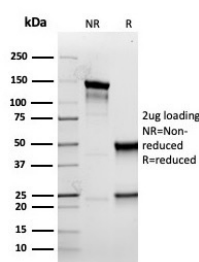
IHC staining of FFPE human squamous cell carcinoma tissue with recombinant Cytokeratin 5 antibody (clone rKRT5/6398). HIER: boil tissue sections in pH 9 10mM Tris with 1mM EDTA for 20 min and allow to cool before testing.



IHC staining of FFPE human prostate tissue with recombinant Cytokeratin 5 antibody (clone rKRT5/6398). HIER: boil tissue sections in pH 9 10mM Tris with 1mM EDTA for 20 min and allow to cool before testing.



Negative control: IHC staining of FFPE human testis tissue with recombinant Cytokeratin 5 antibody (clone rKRT5/6398) at 2ug/ml in PBS for 30min RT. HIER: boil tissue sections in pH 9 10mM Tris with 1mM EDTA for 20 min and allow to cool before testing.



SDS-PAGE analysis of purified, BSA-free recombinant Cytokeratin 5 antibody (clone rKRT5/6398) as confirmation of integrity and purity.

## Description

This Mab recognizes a protein of 58kDa, which is identified as Cytokeratin 5 (KRT5). This type II cytokeratin is specifically expressed in the basal layer of the epidermis with family member KRT14. Antibodies to KRT5 identify basal cells of squamous and glandular epithelia, myoepithelial, and mesothelium. Anti-cytokeratin 5 has been reported useful in the differential diagnosis of metastatic carcinoma in the pleura versus epithelioid mesothelioma. Almost all squamous cell carcinomas, half of transitional carcinomas, and many undifferentiated large cell carcinomas express. Anti-KRT5, along with anti-p63, affords a high sensitivity and specificity for squamous differentiation. Myoepithelial cells of the breast, glandular epithelia, and basal cells of the prostate are labeled with anti-KRT5.

## Application Notes

Optimal dilution of the recombinant Cytokeratin 5 antibody should be determined by the researcher.

## Immunogen

A portion of amino acids 316-590 was used as the immunogen for the recombinant Cytokeratin 5 antibody.

## Storage

Aliquot the recombinant Cytokeratin 5 antibody and store frozen at -20oC or colder. Avoid repeated freeze-thaw cycles.

