

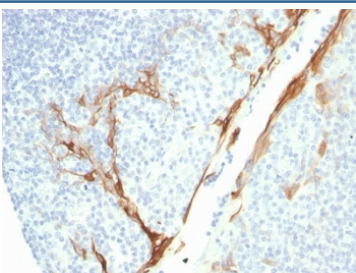
Recombinant Cytokeratin 16 Antibody [clone rKRT16/1714] (V7297)

Catalog No.	Formulation	Size
V7297-100UG	0.2 mg/ml in 1X PBS with 0.1 mg/ml BSA (US sourced) and 0.05% sodium azide	100 ug
V7297-20UG	0.2 mg/ml in 1X PBS with 0.1 mg/ml BSA (US sourced) and 0.05% sodium azide	20 ug
V7297SAF-100UG	1 mg/ml in 1X PBS; BSA free, sodium azide free	100 ug
V7297IHC-7ML	Prediluted in 1X PBS with 0.1 mg/ml BSA (US sourced) and 0.05% sodium azide; *For IHC use only*	7 ml

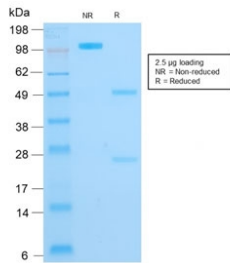
Recombinant **MOUSE MONOCLONAL**

[Bulk quote request](#)

Availability	1-3 business days
Species Reactivity	Human
Format	Purified
Host	Mouse
Clonality	Recombinant Mouse Monoclonal
Isotype	Mouse IgG1, kappa
Clone Name	rKRT16/1714
Purity	Protein G affinity chromatography
UniProt	P08779
Localization	Cytoplasmic
Applications	Immunohistochemistry (FFPE) : 0.5-1ug/ml for 30 min at RT
Limitations	This recombinant Cytokeratin 16 antibody is available for research use only.



IHC testing of FFPE human tonsil with recombinant Cytokeratin 16 antibody (clone rKRT16/1714). Required HIER: boil tissue sections in pH6, 10mM citrate buffer, for 10-20 min followed by cooling at RT for 20 min.



SDS-PAGE analysis of purified, BSA-free recombinant Cytokeratin 16 antibody (clone rKRT16/1714) as confirmation of integrity and purity.

Description

Cytokeratins are a family of intermediate filament proteins that assemble into filaments through forming heterodimers of one type I Cytokeratins (Cytokeratins 9 to 23) and one type II Cytokeratins (keratins 1 to 8). The cytokeratin proteins play a critical role in differentiation, as well as tissue specialization and function, to maintain the overall structural integrity of epithelial cells. Cytokeratins are also useful markers in identifying the origin of metastatic tumors. Cytokeratin 16 is expressed in benign stratified squamous epithelium and squamous cell carcinoma of the head and neck, as well as luminal cells of mammary gland and sweat ducts. It is absent in non-invasive breast carcinomas and normal breast tissue.

Application Notes

Optimal dilution of the recombinant Cytokeratin 16 antibody should be determined by the researcher.

1. The prediluted format is supplied in a dropper bottle and is optimized for use in IHC. After epitope retrieval step (if required), drip mAb solution onto the tissue section and incubate at RT for 30 min.

Immunogen

A C-terminal region peptide was used as the immunogen for the recombinant Cytokeratin 16 antibody.

Storage

Store the recombinant Cytokeratin 16 antibody at 2-8°C (with azide) or aliquot and store at -20°C or colder (without azide).