

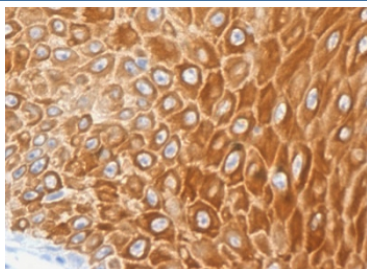
Recombinant Cytokeratin 16 Antibody / Rabbit Monoclonal [clone CTKN16-1R] (V3737)

Catalog No.	Formulation	Size
V3737-100UG	0.2 mg/ml in 1X PBS with 0.1 mg/ml BSA (US sourced) and 0.05% sodium azide	100 ug
V3737-20UG	0.2 mg/ml in 1X PBS with 0.1 mg/ml BSA (US sourced) and 0.05% sodium azide	20 ug
V3737SAF-100UG	1 mg/ml in 1X PBS; BSA free, sodium azide free	100 ug
V3737IHC-7ML	Prediluted in 1X PBS with 0.1 mg/ml BSA (US sourced) and 0.05% sodium azide; *For IHC use only*	7 ml

Recombinant **RABBIT MONOCLONAL**

[Bulk quote request](#)

Availability	1-3 business days
Species Reactivity	Human
Format	Purified
Host	Rabbit
Clonality	Recombinant Rabbit Monoclonal
Isotype	Rabbit IgG, kappa
Clone Name	CTKN16-1R
Purity	Protein A affinity chromatography
UniProt	P08779
Localization	Cytoplasmic
Applications	Immunohistochemistry (FFPE) : 1-2ug/ml for 30 min at RT Prediluted IHC Only Format : incubate for 30 min at RT (1)
Limitations	This recombinant Cytokeratin 16 antibody is available for research use only.



IHC testing of FFPE human skin with recombinant Cytokeratin 16 antibody (clone CTKN16-1R). Required HIER: boil tissue sections in pH6, 10mM citrate buffer, for 10-20 min followed by cooling at RT for 20 min.

Description

Cytokeratin 16 is an epidermis-specific type I keratin that plays a key role in skin. Acts as a regulator of innate immunity in response to skin barrier breach: required for some inflammatory checkpoint for the skin barrier maintenance. [UniProt]

Application Notes

The stated application concentrations are suggested starting points. Titration of the recombinant Cytokeratin 16 antibody may be required due to differences in protocols and secondary/substrate sensitivity.

1. The prediluted format is supplied in a dropper bottle and is optimized for use in IHC. After epitope retrieval step (if required), drip mAb solution onto the tissue section and incubate at RT for 30 min.

Immunogen

A C-terminal region peptide was used as the immunogen for the recombinant Cytokeratin 16 antibody.

Storage

Store the recombinant Cytokeratin 16 antibody at 2-8oC (with azide) or aliquot and store at -20oC or colder (without azide).