

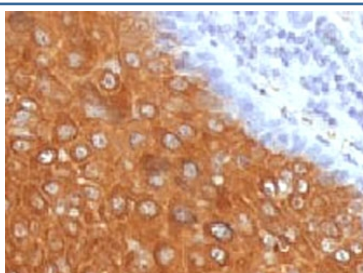
Recombinant Cytokeratin 10 Antibody / Rabbit Monoclonal [clone CTKN10-2R] (V3711)

Catalog No.	Formulation	Size
V3711-100UG	0.2 mg/ml in 1X PBS with 0.1 mg/ml BSA (US sourced) and 0.05% sodium azide	100 ug
V3711-20UG	0.2 mg/ml in 1X PBS with 0.1 mg/ml BSA (US sourced) and 0.05% sodium azide	20 ug
V3711SAF-100UG	1 mg/ml in 1X PBS; BSA free, sodium azide free	100 ug
V3711IHC-7ML	Prediluted in 1X PBS with 0.1 mg/ml BSA (US sourced) and 0.05% sodium azide; *For IHC use only*	7 ml

Recombinant RABBIT MONOCLONAL

[Bulk quote request](#)

Availability	1-3 business days
Species Reactivity	Human
Format	Purified
Clonality	Recombinant Rabbit Monoclonal
Isotype	Rabbit IgG, kappa
Clone Name	CTKN10-2R
Purity	Protein A affinity chromatography
UniProt	P13645
Localization	Cytoplasmic
Applications	Immunohistochemistry (FFPE) : 0.1-0.2ug/ml for 30 min at RT Prediluted IHC Only Format : incubate for 30 min at RT (1)
Limitations	This recombinant Cytokeratin 10 antibody is available for research use only.



IHC testing of FFPE human skin with recombinant Cytokeratin 10 antibody (clone CTKN10-2R). Required HIER: boil tissue sections in pH 9 10mM Tris with 1mM EDTA for 10-20 min followed by cooling at RT for 20 min.

Description

Cytokeratin-10 (CK-10) or keratin-10 (K10) is a protein that in humans is encoded by the KRT10 gene. CK10 is a member of the type I (acidic) cytokeratin family, which belongs to the superfamily of intermediate filament (IF) proteins. Keratins are heteropolymeric structural proteins which form the intermediate filament. These filaments, along with actin microfilaments and microtubules, compose the cytoskeleton of epithelial cells. Mutations in this gene are associated with epidermolytic hyperkeratosis. [Wiki]

Application Notes

The stated application concentrations are suggested starting points. Titration of the recombinant Cytokeratin 10 antibody may be required due to differences in protocols and secondary/substrate sensitivity.

1. The prediluted format is supplied in a dropper bottle and is optimized for use in IHC. After epitope retrieval step (if required), drip mAb solution onto the tissue section and incubate at RT for 30 min.

Immunogen

A cytoskeletal preparation extracted from human ectocervical epithelium was used as the immunogen for the recombinant Cytokeratin 10 antibody.

Storage

Store the recombinant Cytokeratin 10 antibody at 2-8oC (with azide) or aliquot and store at -20oC or colder (without azide).