

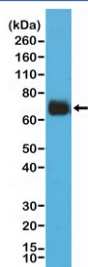
## Recombinant Cyclooxygenase 2 Antibody / COX2 / PTGS2 [clone RM348] (R20370)

Catalog No.	Formulation	Size
R20370-0.1ML	Antibody in PBS with 50% glycerol, 1% BSA and 0.09% sodium azide	100 ul

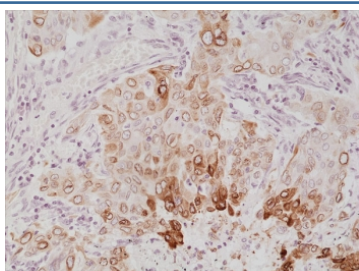
Recombinant **RABBIT MONOCLONAL**

[Bulk quote request](#)

Availability	1-3 business days
Species Reactivity	Human
Format	Purified
Clonality	Recombinant Rabbit Monoclonal
Isotype	Rabbit IgG
Clone Name	RM348
Purity	Protein A purified from animal origin-free supernatant
UniProt	P35354
Localization	Cytoplasmic, nuclear
Applications	Immunohistochemistry (FFPE) : 1:500-1:1000 Western Blot : 1:1000-1:20000
Limitations	This recombinant Cyclooxygenase 2 antibody is available for research use only.



Western blot testing of human HeLa cell lysate with recombinant Cyclooxygenase 2 antibody at 1:2000 dilution. Predicted molecular weight ~69 kDa.



IHC staining of FFPE human lung cancer tissue with recombinant Cyclooxygenase 2 antibody at 1:1000.

## Description

This antibody reacts to human COX-2 (Prostaglandin G/H synthase 2).

## Application Notes

The stated application concentrations are suggested starting points. Titration of the recombinant Cyclooxygenase 2 antibody may be required due to differences in protocols and secondary/substrate sensitivity.

## Immunogen

A peptide corresponding to the C-terminus of human COX-2 was used as the immunogen for the recombinant Cyclooxygenase 2 antibody.

## Storage

Store the recombinant Cyclooxygenase 2 antibody at -20oC.